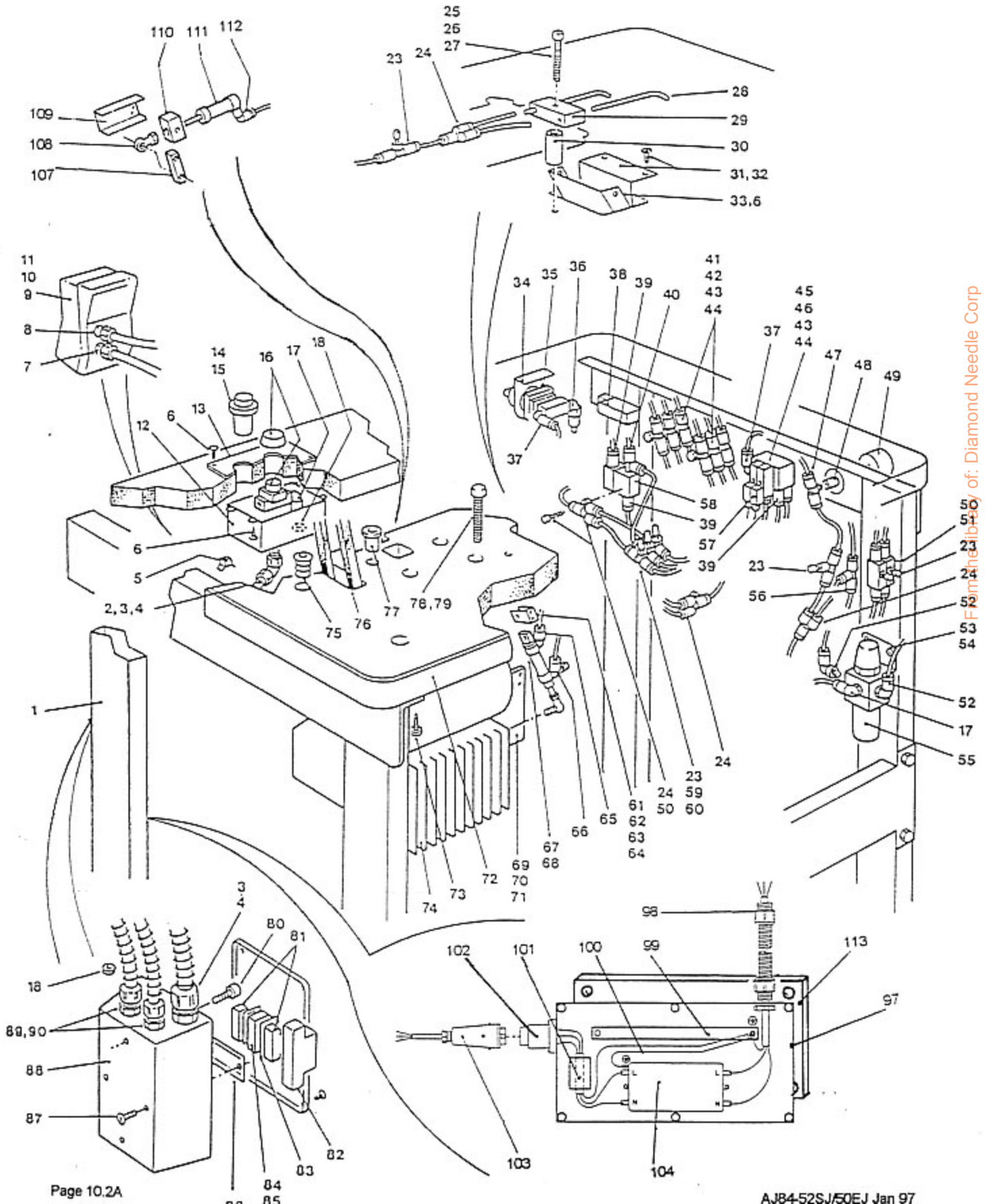


10.1A ELECTRICAL AND PNEUMATIC COMPONENTS - AJ84-50EJ Only



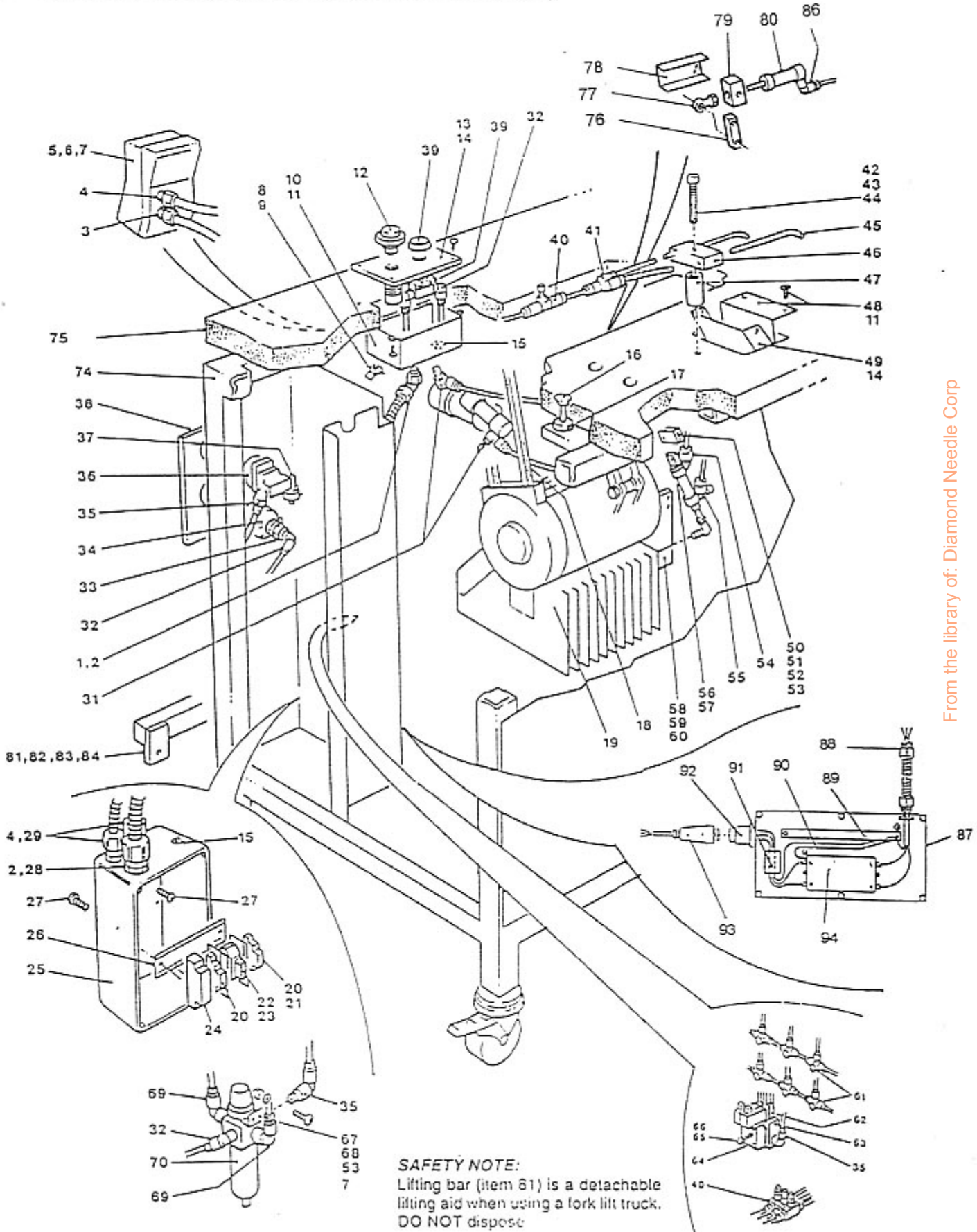
From the library of: Diamond Needle Corp

10.1A ELECTRICAL AND PNEUMATIC COMPONENTS - AJ84-50EJ Only

ITEM	CODE No.	DESCRIPTION	QTY	ITEM	CODE No.	DESCRIPTION	QTY
1	047154	Frame	1	61	046030	Clevis	1
2	058646	90° Elbow Connector	1	62	020856	M5x12 Cap Hd Screw	2
3	058610	Conduit Fitting, 20mm	2	63	021027	M5 Spring Washer	2
4	058608	Conduit, 20mm	1	64	021087	M5 Nut	2
5	058630	Cable Tie Saddles	10	65	032095	Elbow, M5x4	2
6	020949	No.6 Posi Wood Screw	12	66	032040	Flow Control	1
7	058614	PG11 Conduit Fitting	1	67	046025	Motor Start Cylinder	1
8	058612	PG13.5 Conduit Fitting, 16mm	4	68	—	Rod End	1
9	—	EFKA Starter Box	1	69	047011	Cylinder Mounting Plate	1
10	—	M5x20 Cap Hd Screw	2	70	020856	M2x12 Cap Hd Screw	4
11	021098	M5 Plain Washer	2	71	021027	M5 Spring Washer	4
12	058626	Emergency Stop and Start Enclosure	1	72	059037	Table Top	1
13	048455	Stop/Start Plate	1	73	—	No.12 x1" Wood Screw	4
14	030922	Emergency Stop Button	1	74	046730	EFKA Motor	1
15	030957	N/C Contact Block	2	75	025490	Grommet	1
16	032160	Pneumatic Start Button	1	76	046955	Drive Belt	1
17	032100	Elbow, 1/8" x 4mm	4	77	025490	Nylon Sleeve	1
18	058625	Rubber Grommet	2	78	021068	Motor Fastening Bolt	3
19				79	052016	Anti-Vibration Mount	3
20				80	—	M4x16 Butt Hd Screw	2
21				81	058620	Bus Bar	2
22				82	058616	Delay On Energiser	1
23	060325	In-line Flow Control	7	83	—	Tuffnel Dividers	2
24	060326	"Y" Connector	4	84	058618	Relay	1
25	020835	M6x80 Cap Hd Screw	1	85	058622	Relay Base and Clip	1
26	021099	M6 Washer	2	86	058604	Din Rail	1
27	021088	M6 Full Nut	1	87	—	M4x12 Butt Hd Screw	2
28	046685	Waste Chute Blower	2	88	058602	Mains, Relay, Delay Enclosure	1
29	046680	Waste Chute Blower Bracket	1	89	058612	Conduit Fitting, 16mm	2
30	046790	Blower Spacer	1	90	058606	Conduit, 16mm	3
31	046655	Waste Chute Edge Piece	1			<i>Not Illustrated</i>	
32	020949	No.6 x5/8" Csk Screw	2	91	059021	Juki Head c/w Knife	1
33	046660	Waste Chute	1	92	—	Needles	
34	107350	Air Valve Mounting Bracket	1	93	047159	Waste Bin	1
35	032120	Air Valve	1	94	048480	Tube, 4mm	As req'd
36	020179	Elbow	1	95	048481	Tube, 5mm	As req'd
37	032105	Elbow, 6mm	2	96	048482	Tube, 6mm	As req'd
38	047140	Pressure Switch	2				
39	032110	M5x4 Straight Connector	6	97	058688	Filter Enclosure	1
40	060989	Tee Adaptor, 4mm	1	98	058696	Filter to ON/OFF Harness	1
41	032150	T" Connector	6	99	058690	Clamp Bar	1
42	020879	M4x40 Cap Hd Screw	4	100	058695	Earth Lead	1
43	021010	M4 Plain Washer	4	101	058678	10mm Ferrite	1
44	021086	M4 Nut	2	102	058681	7 Way Connector	1
45	058005	Manifold	1	103	058693	Mains Connector	1
46	020855	M4x30 Cap Hd Screw	2	104	058686	Mains Filter	1
47	032155	T" Connector	1	113	058698	Filter Mounting Plate	1
48	020727	Pressure Gauge Connector	1			<i>Not Illustrated</i>	
49	046865	Pressure Gauge	1	105	058736	5/6mm Dia. Ferrite	2
50	020847	M3x35 Cap Hd Screw	4	106	058682	6/7mm Dia. Ferrite	1
51	M0105	Nylon Spacer	2			<i>Presser Foot Lifting Assy.</i>	
52	032107	Elbow, 6mm	2	107	047115	Presser Foot Lever	1
53	032015	Mounting Bracket	1	108	028200	Cylinder Rod End	1
54	020984	M5x16 Butt Hd Screw	2	109	047149	Foot Cylinder Guard	1
55	048045	Filter Regulator	1	110	047148	Foot Cylinder Guard Block	1
56	032156	T" Connector	1	111	047170	Presser Foot Cylinder	1
57	060390	Solenoid Valve	2	112	032095	Elbow, M5 x 4	2
58	046746	Pilot Valve	1				
59	—	M3x30 Cap Hd Screw	2				
60	021085	M3 Nut	2				

From the library of: Diamond Needle Corp

10.1B ELECTRICAL AND PNEUMATIC COMPONENTS - AJ84-52SJ Only



From the library of: Diamond Needle Corp

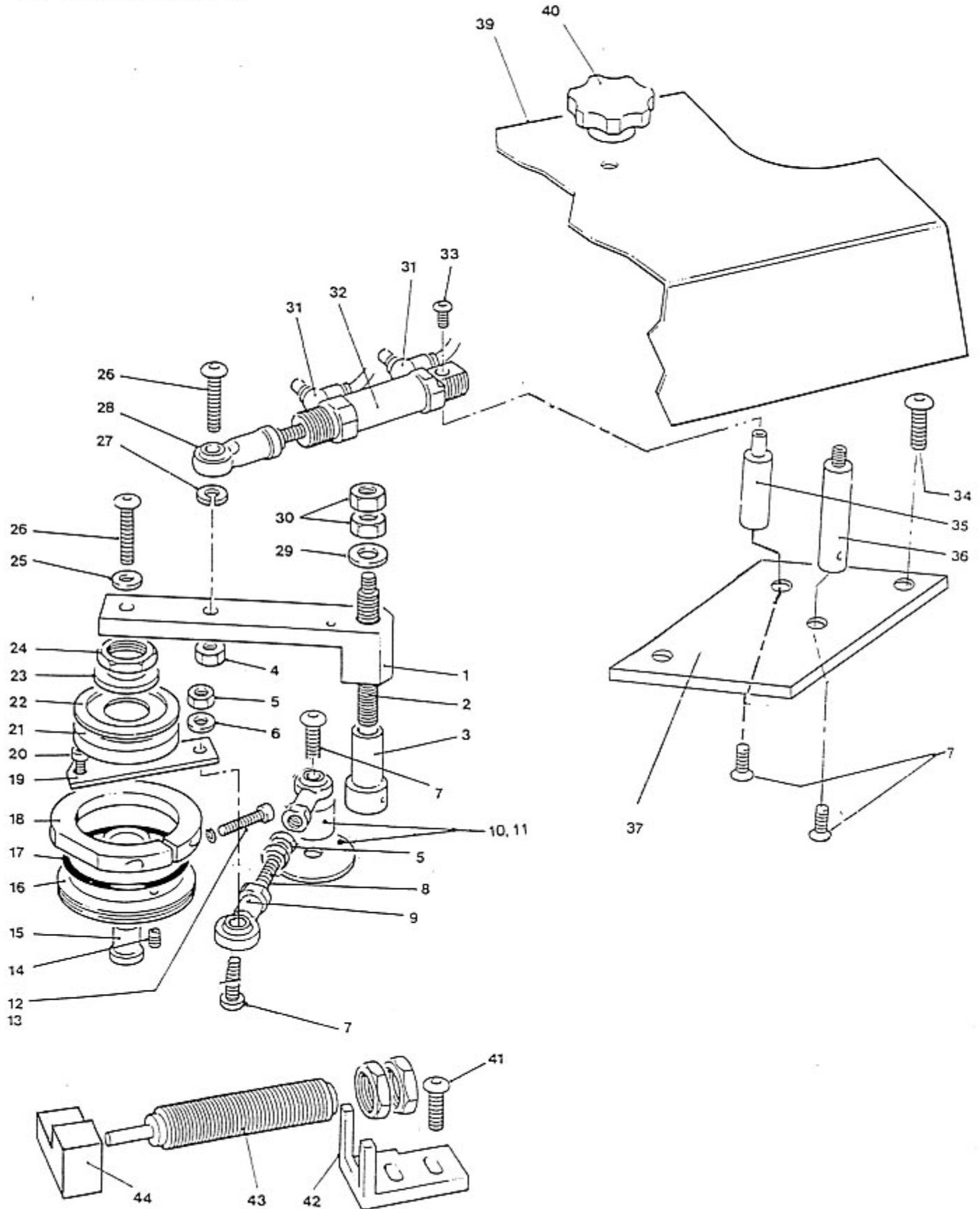
SAFETY NOTE:
Lifting bar (item 81) is a detachable lifting aid when using a fork lift truck. DO NOT dispose

10.1B ELECTRICAL AND PNEUMATIC COMPONENTS - AJ84-52SJ Only

ITEM	CODE No.	DESCRIPTION	QTY	ITEM	CODE No.	DESCRIPTION	QTY
ELECTRICAL COMPONENTS				43	021099	M6 Plain Washer	2
1	058646	90° Elbow Connector	1	44	021088	M6 Nut	1
2	058610	Conduit Fitting, 20mm	2	45	046685	Waste Chute Blower	2
3	058614	PG11 Conduit Fitting, 16mm	1	46	046680	Waste Chute Blower Bracket	1
4	058612	PG13.5 Conduit Fitting, 16mm	3	47	046790	Blower Spacer	1
5	—	EFKA Starter Box	1	48	046655	Waste Chute Edge Piece	1
6	—	M5x20 Cap Hd Screw	2	49	046660	Waste Chute	1
7	021098	M5 Plain Washer	4	50	046030	Clevis	1
8	058630	Cable Tie Saddles	10	51	020856	M5x12 Cap Hd Screw	2
9	020949	No.8x1/2" Pan Hd Screw	10	52	021027	M5 Spring Washer	2
10	058626	Emergency Stop and Start Enclosure	1	53	021087	M5 Nut	4
11	020949	No.6x5/8" Csk Screw	6	54	032095	Elbow, M5x4mm	2
12	030245	Emergency Stop	1	55	032045	Flow Control	1
13	048455	Stop/Start Legend Plate	1	56	046025	Motor Start Cylinder	1
14	032160	No.6x5/8" Pan Hd Screw	6	57	—	Rod End	1
15	058625	Rubber Grommet	2	58	047011	Cylinder Mounting Plate	1
16	021068	Motor Mounting Bolt	3	59	020856	M5x12 Cap Hd Screw	4
17	052016	Anti-Vibration Mount	3	60	021027	M5 Spring Washer	4
18	047150	Drive Belt	1	61	032150	T' Connector	6
19	046730	EFKA Motor	1	62	032110	Straight Connector, M5x4mm	4
20	058620	Bus Bar	2	63	058005	Manifold	1
21	—			64	025490	Solenoid Valve	2
22	058618	Relay	2	65	020855	M4x30 Cap Hd Screw	2
23	058622	Relay Base and Clip	1	66	021086	M4 Nut	2
24	058616	Delay On Energiser	1	67	032015	Mounting Bracket	1
25	058602	Mains, Relay, Delay Enclosure	1	68	020982	M5x10 Butt Hd Screw	2
26	058604	Din Rail	1	69	032107	Elbow, 6mm	2
27	—	M4x12 Butt Hd Screw	4	70	048045	Filter/Regulator <i>Not Illustrated</i>	1
28	058608	Conduit, 20mm	1	71	048480	Tube, 4mm	As req'd
29	058606	Conduit, 16mm <i>Not Illustrated</i>	2	72	048481	Tube, 5mm	As req'd
30	048967	Reset Fuse	1	73	048482	Tube, 6mm	As req'd
PNEUMATIC COMPONENTS				TABLE AND FRAME			
31	032045	Flow Control	2	74	046715	Frame	1
32	032100	Elbow, 1/8"x4mm	5	75	059037	Table Top	1
33	020727	Air Connector	1	76	047115	Presser Foot Lever	1
34	046865	Pressure Gauge	1	77	028200	Cylinder Rod End	1
35	032107	Elbow, 6mm	3	78	047149	Foot Cylinder Guard	1
36	032120	Air Valve	1	79	047148	Foot Cylinder Guard Block	1
37	020719	Elbow, 1/4"x8mm	1	80	047170	Presser Foot Cylinder	1
38	046505	On/Off Legend Plate	1	81	—	Lifting Bar	1
39	032160	Pneumatic Start Button	1	82	—	M8x50 Cap Hd Screw	2
40	060325	In-Line Flow control	4	83	021058	M8 Nut	2
41	060326	'Y' Connector	1	84	021093	M6 Plain Washer	2
42	020835	M6x80 Cap Hd Screw	1	85	059021	Juki Head c/w Knife	1
				86	032095	Elbow, M5x4	1
				MAINS FILTER			
				87	058688	Filter Enclosure	1
				88	058696	Filter to ON/OFF Harness	1
				89	058690	Clamp Bar	1
				90	058695	Earth Lead	1
				91	058678	10mm Ferrite	1
				92	058681	7 Way Connector	1
				93	058693	Mains Connector	1
				94	058686	Mains Filter	1
				<i>Not Illustrated</i>			
				95	058736	5/6mm Dia. Ferrite	2
				96	058682	6/7mm Dia. Ferrite	1

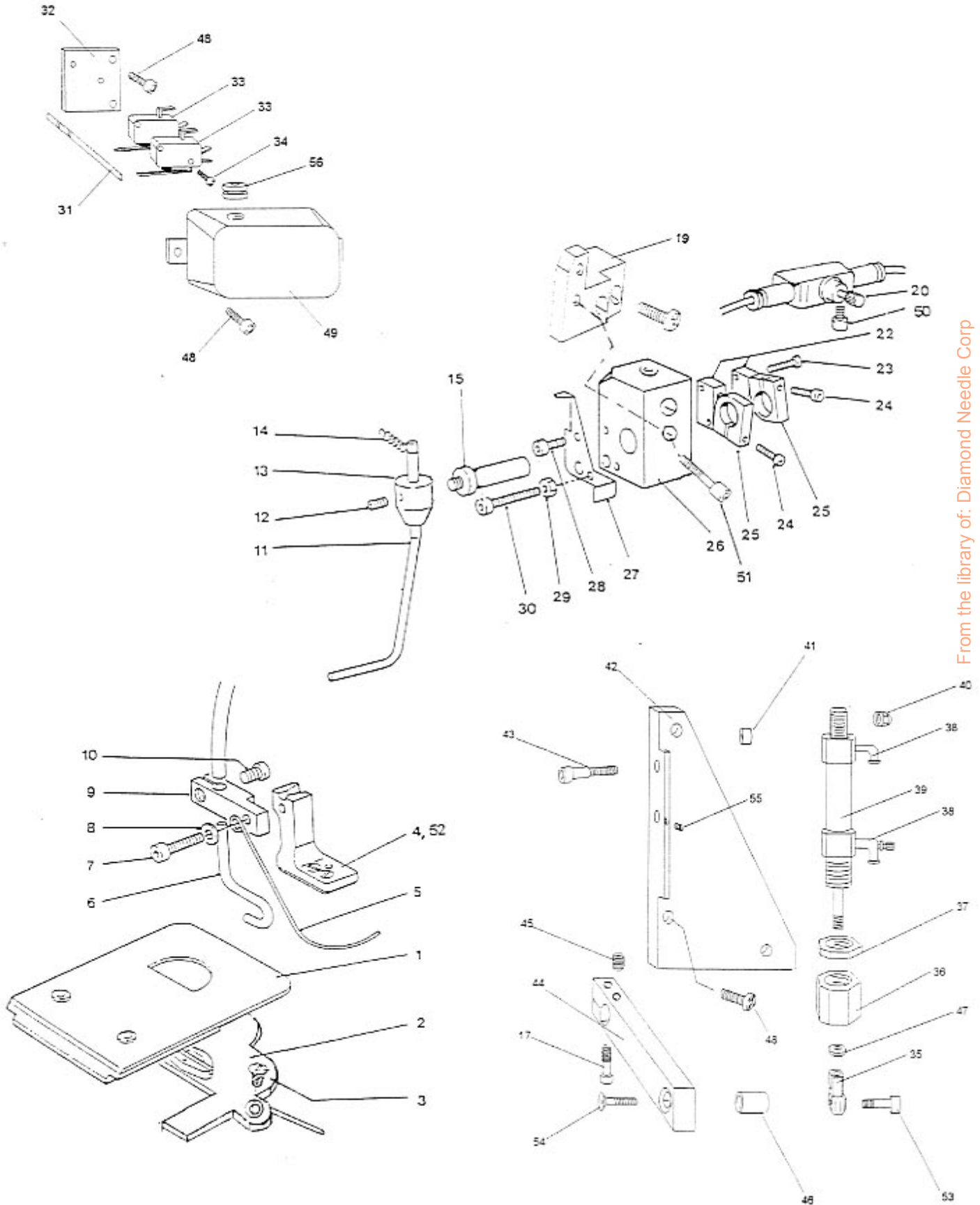
From the library of: Diamond Needle Corp

10.2 JIG DRIVE/SNUBBER



From the library of: Diamond Needle Corp

10.3 THROAT PLATE/PRESSER FOOT/TRIP ARM/SAFETY SWITCH



From the library of: Diamond Needle Corp

10.2 JIG DRIVE/SNUBBER

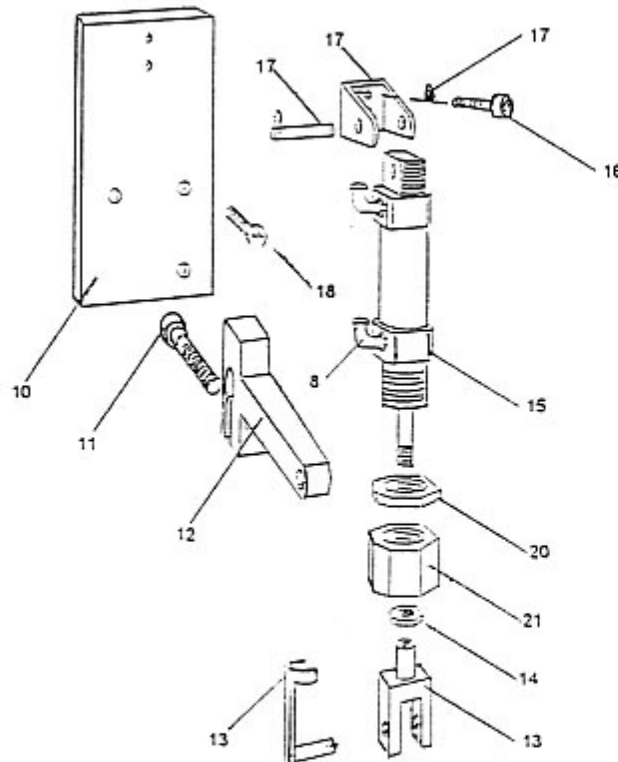
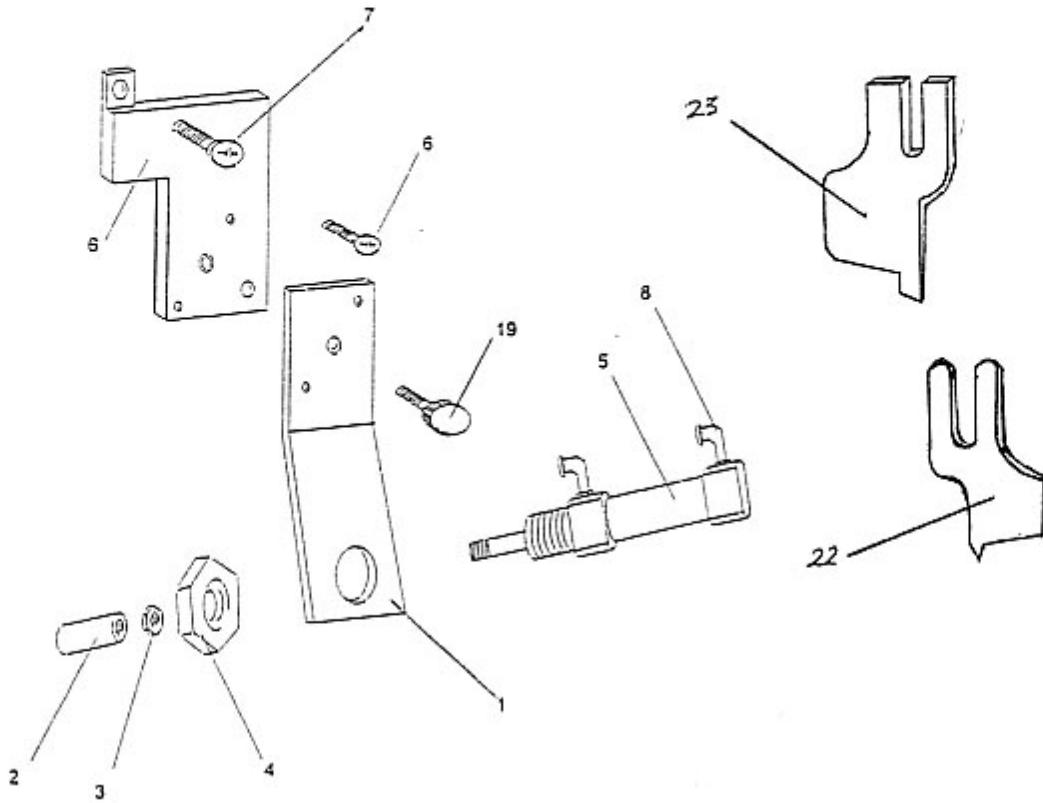
ITEM	CODE No.	DESCRIPTION	QTY
JIG DRIVE			
1	048085	Drive Arm	1
2	046935	Drive Cover Stud	1
3	030511	Mounting Arm Eccentric	1
4	021088	M6 Nut	1
5	021087	M5 Nut	3
6	021098	M5 Plain Washer	1
7	020984	M5x16 Butt Hd Screw	4
8	029060	Stud	1
9	028200	Rod End	2
10	046535	Oil Cover Tube	1
11	046530	Oil Cover	1
12	020855	M4x30 Cap Hd Screw	1
13	021026	M4 Spring Washer	1
14	020922	M5x5 Grub Screw	2
15	025280	Pivot Spindle	1
16	029010	Drive Wheel	1
17	029125	'O' Ring	1
18	025290	Free Wheel Housing	1
19	046920	Drive Plate	1
20	020842	M3x10 Cap Screw	2
21	029070	Bearing	1
22	029126	Nilos Ring	1
23	029020	Washer	1
24	029030	Locknut	1
25	021099	M6 Washer	1
26	020992	M6x25 Butt Hd Screw	2
27	021028	M6 Spring Washer	1
28	028210	Rod End	1
29	021093	M8 Plain Washer	1
30	021058	M8 Nut	2
31	032040	Flow Control	2
32	028192	Cylinder	1
33	—	M4x6 Butt Hd Screw	1
34			
35	030620	Drive Cylinder Stud	1
36	059110	Drive Cover Stud	1
37	059023	Jig Drive Base Plate	1
38	020807	M5x10 Csk Screw	1
39	059115	Drive Cover Guard	1
40	046525	Thumb Nut, 8mm	2
SNUBBER			
41	020984	M5x16 Butt Hd Screw	2
42	046515	Snubber Bracket	1
43	046765	Damper Shock Absorber	1
44	047106	Nylon Damper Block	1

**10.3. THROAT PLATE/PRESSER FOOT/TRIP ARM/
 SAFETY SWITCH/DENSE CYLINDER**

ITEM	CODE No.	DESCRIPTION	QTY	ITEM	CODE No.	DESCRIPTION	QTY
THROAT PLATE				DENSE CYLINDER CONTINUED.....			
1	059137	Plate Assembly	1	42	059015	Dense Cylinder Bkt	1
2	059006	Throat Plate 3/16"	1	43	—	M5x25 Shoulder Bolt	1
s	059005	Throat Plate 1/8"	1	44	059065	Dense Activtating Arm	1
s	059007	Throat Plate 1/4"	1	45	—	M6x8 Cup Pt. Grub Screw	1
3	059016	Throat Plate Screw	2	46	059060	Activating Arm Spacer	1
		s = Special		47	021087	M5 Nut	1
PRESSER FOOT							
4	025550	Presser Foot 3/16"	1	48	—	3/16"x28 x 9 long Screw	3
s	025540	Presser Foot 1/8"	1	49	059130	Microswitch Cover	1
s	025560	Presser Foot 1/4"	1	50	020844	M3x16 Cap Hd Screw	2
5	025702	Finger Guard	1	51	020882	M5x35 Cap Hd Screw	2
6	025440	Nozzle	1	52	059020	Presser Foot Bush	1
7	—	6x40 x 5/8 Long Cap Hd.	1	53	020863	M16x16 Cap Hd Screw	1
8	021010	M4 Plain Washer	1	54	—	M6x16 Csk Screw	1
9	025450	Mounting Block	1	55	020917	M3x5 Cup Pt. Grub Screw	1
10	020840	M3X5 Cap Hd Screw	1	56	058625	Grommet	1
		s = Special					
TRIP ARM						<i>Not Illustrated</i>	
11	059080	Trip Arm Stop	1	57	059092	Air Blower	1
12	020919	M4X5 Grub Screw	1	58	059131	Microswitch Cover Gasket	1
13	025200	Pivot Body	1				
14	028270	Spring	1				
15	025730	Pivot Spindle	1				
16	—	M6x20 Cap Hd Screw	1				
17	020858	M5x25 Cap Hd Screw	1				
18	021088	M6 Nut	1				
19	059075	Mounting Block	1				
20	060325	In-Line Flow Control	1				
21	021099	M6 Plain Washer	2				
22	029900	Micro Switch	2				
23	—	8 BAx3/4" Pan Hd Screw	2				
24	020843	M3x12 Cap Hd Screw	2				
25	025740	Cam	2				
26	059090	Body	1				
27	059085	Stop Bracket	1				
28	020878	M4x10 Cap Hd Screw	1				
29	021086	M4 Nut	1				
30	020852	M4x25 Cap Hd Screw	1				
SAFETY SWITCH							
31	059100	Switch Activating Pin	1				
32	059105	Microswitch Plate	1				
33	028220	Microswitch	2				
34	—	6 BAx1" Pan Hd Screw	2				
DENSE CYLINDER							
35	026210	Rod End Bearing	1				
36	059025	Dense Adjust Nut	1				
37	—	M16 Lock Nut	1				
38	032040	Flow Control	2				
39	059022	Dense Cylinder	1				
40	—	M5 Nylock Nut	1				
41	059030	Dense Cylinder Spacer	1				

From the library of: Diamond Needle Corp

10.4 JIG LOCATION MECHANISM/KNIFE ASSEMBLY



10.4. JIG LOCATION MECHANISM / KNIFE ASSEMBLY

ITEM	CODE No.	DESCRIPTION	QTY
------	----------	-------------	-----

JIG LOCATION MECHANISM

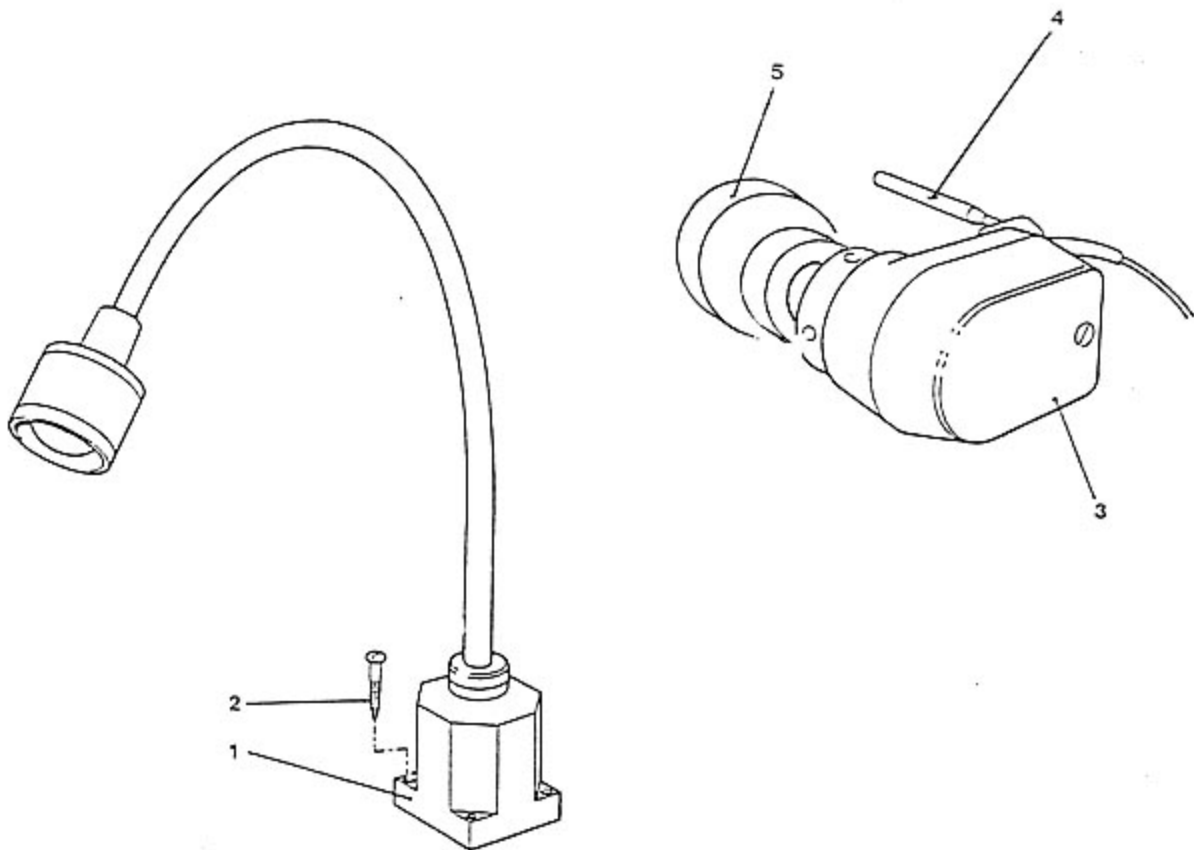
1	059120	Cylinder Bracket	1
2	059095	Nylatron End	1
3	021087	M5 Nut	1
4	—	M16 Lock Nut	1
5	059125	Jig Location Cylinder	1
6	—	1 1/64"x40 x 9 Long	1
7	—	3/16"x28 x 9 Long	2
8	032100	90° Elbow, 4mm	4
9	059122	Jig Position Mtg Plate	1

KNIFE ASSEMBLY

10	059011	Knife Mounting Plate	1
11	020857	M5x16 Cap Hd Screw	1
12	059013	Knife Activating Lever	1
13	059019	Rod End Clevis Kit	1
14	021087	M5 Lock Nut	1
15	059018	Knife Cylinder	1
16	—	M6x12 Button Hd Screw	2
17	059017	Clevis Kit	1
18	—	15/64"x28 x 12 Long	3
19	059123	Thumb Nut	1
20	—	M20 Lock Nut	1
21	059145	Knife Adjust Nut	1
22	015420	Side Trimming Knife, short	1
23	047176	Side Trimming Knife, long	1

10.5 LAMP/SYNCHRONISER

ITEM	CODE No.	DESCRIPTION	QTY
LAMP			
1	048075	Work Light Assembly	1
2	—	Wood Screw No. 8 1-1/4"x4"	4
	048079	Hallogen Bulb	1
SYNCHRONISER			
3	—	EFKA Synchroniser	1
4	059035	Synchroniser Stabiliser	1
5	059055	Handwheel Boss	1



JUKI

High Speed 1-Needle Lockstitch Industrial Sewing Machine with Automatic Thread Trimmer with Vertical Edge Trimmer

DLM-5400N-7 Series

PARTS LIST

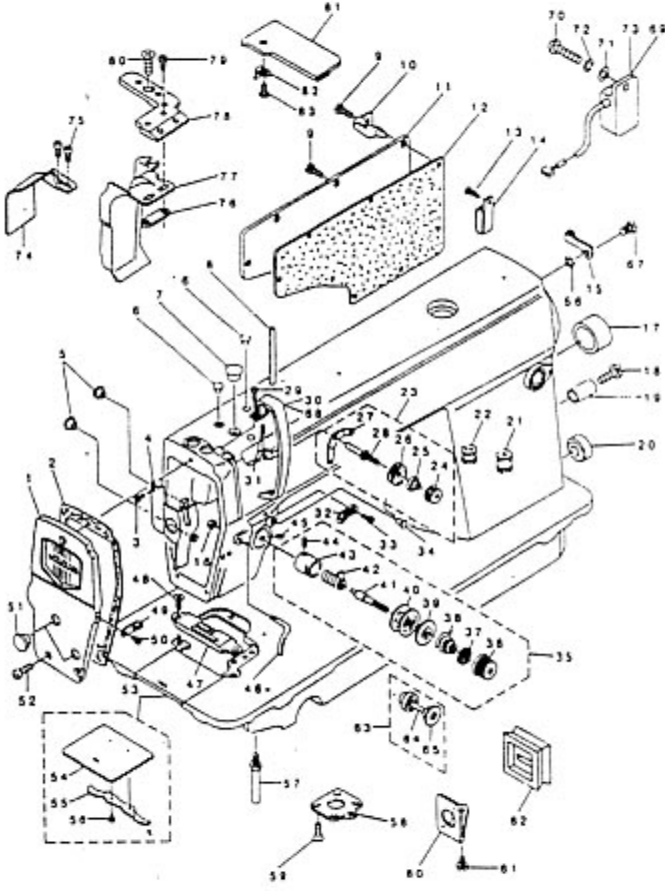
29122702
No.0891-01

REF. NO. NOTE PART NO. DESCRIPTION Qty

1		113-25750	FACE PLATE ASK.	1
2		113-00506	FACE PLATE GASKET	1
3		SS-6080410-SP	SCREW 3/16-28 L#4	1
4		110-00858	ARM OIL SHIELD ASK.	1
5		TA-1250504-RD	RUBBER PLUG	2
6		TA-0850604-RD	RUBBER PLUG	1
7		TA-1250705-RD	RUBBER PLUG	1
8		81114-012-000	THREAD GUIDE PIN	1
9		SS-4120915-SP	SCREW 3/16-28 L#9	1
10	201	111-02605	CORD HOLDER	1
11		110-70901	SIDE PLATE	1
12		110-00619	GASKET	1
13		SS-4121215-SP	SCREW 3/16-28 L#12	1
14		02112-555-800	CORD HOLDER, LARGE	1
15		110-30301	CABLE HOLDER	1
16		NS-6300510-SP	NUT 7/64-40	1
17		TA-2000501-RD	RUBBER PLUG	1
18	202	SS-6121840-SP	SCREW 3/16-28 L#18	1
19	202	111-00500	REVERSE FEED LEVER STOPPER	1
20		TA-2101002-RD	RUBBER PLUG	1
21	203	110-30201	RUBBER BUSHING	1
22	202	111-00104	MAGNET CORD RUBBER	1
23		110-72451	THREAD TENSION ASK.	1
24		110-45309	THREAD TENSION NUT	(1)
25		110-45101	THREAD TENSION SPRING	(1)
26		83274-027-000	ROBBER WINDUP TENSION DISC	(2)
27		110-45200	THREAD-TENSION GUIDE	(1)
28		110-45002	FIRST TENSION POST	(1)
29		SS-4120615-SP	SCREW 3/16-28 L#6	(1)
30		110-71008	THREAD TAKE-UP LEVER COVER	1
31		SS-4120615-SP	SCREW 3/16-28 L#6	1
32		110-18504	ARM THREAD GUIDE A	1
33		110-01500	SCREW	1
34		TA-0850604-RD	RUBBER PLUG	1
35		110-72352	THREAD TENSION ASK.	1
36		110-72204	TENSION NUT	(1)
37		83120-125-000	ROTATING STOPPER	(1)
38		83129-012-000	TENSION SPRING	(1)
39		83132-552-000	THREAD TENSION DISK PRESSER	(1)
40		83126-012-000	THREAD TENSION DISK	(2)
41		83115-552-000	TENSION POST	(1)
42		83128-012-000	TAKE-UP SPRING	(1)
43		83111-126-000	TENSION POST SOCKET	(1)
44		SS-8090670-SP	SCREW 9/64-40 L# 5.5	(1)
45		SS-8150710-SP	SCREW 15/64-28 L#7	1
46		113-05513	ARM THREAD GUIDE, C	1
47		81190-522-500	GAUGE PLATE 1/8 S	1
48		SS-2110915-SP	SCREW 11/64-40 L#8.5	2
49		110-18603	ARM THREAD GUIDE B	1
50		SS-6110610-TP	SCREW 11/64-40 L#6	1
51		TA-1250406-RD	RUBBER PLUG D=12.5 L#4	2
52		SS-4121015-SP	SCREW 3/16-28 L#10	3
53		110-01658	BED SLIDE ASK.	1
54		81110-012-000	SLIDE PLATE	(1)
55		110-01609	BED SLIDE SPRING	(1)
56		SS-6060210-SP	SCREW 3/32-56 L# 1.9	(1)
57		110-01104	BED SCREW STUD	4
58		113-00407	PRESSER BAR SUPPORT	1
59		SS-1120710-SP	SCREW 3/16-28 L#6.5	4
60		113-45709	OIL SHIELD	1
61		SS-6170610-TP	SCREW 11/64-40 L#6	1
62		113-45600	OIL RUBBER	1
63		83133-415-040	TENSION RELEASE PIN CAP	1
64		83118-415-000	TENSION RELEASE PIN	(1)
65		83136-415-000	CAP RING	(1)
66		MF-0530002-KS	TOOTHED WASHER D#5.5	1
67		SS-4120615-SP	SCREW 3/16-28 L#6	1
68	205	180-77503	THREAD TAKE-UP LEVER COVER	1
69	206	86001-350-AAA	RESISTANCE PACK AA ASK.	1
70	204	SS-4121215-SP	SCREW 3/16-28 L#12	1
71	204	MF-0501018-3J	WASHER 5X10.5X1	1
72	204	NS-0510002-KP	SPRING WASHER 5.129.2X1.3	1
73	204	86001-350-AAF	RESISTANCE PACK AF ASK.	1
74		113-46400	WASTE MATERIAL GUIDE	1
75		113-45808	SCREW	2
76		81193-530-000	WASTE MATERIAL GUARD PLATE	1
77		113-46905	WASTE MATERIAL GUARD, C	1
78		113-46004	NEEDLE PLATE, A	1
79		SS-4080310-SP	SCREW 1/8-44 L#3.4	2
80		SS-2110915-SP	SCREW 11/64-40 L#8.5	2
81		81115-530-007	THROAT PLATE COVER 7	1
82		81115-522-000-A	OPER COVER SPRING	1
83		SS-4080310-SP	SCREW 1/8-44 L#3.4	1

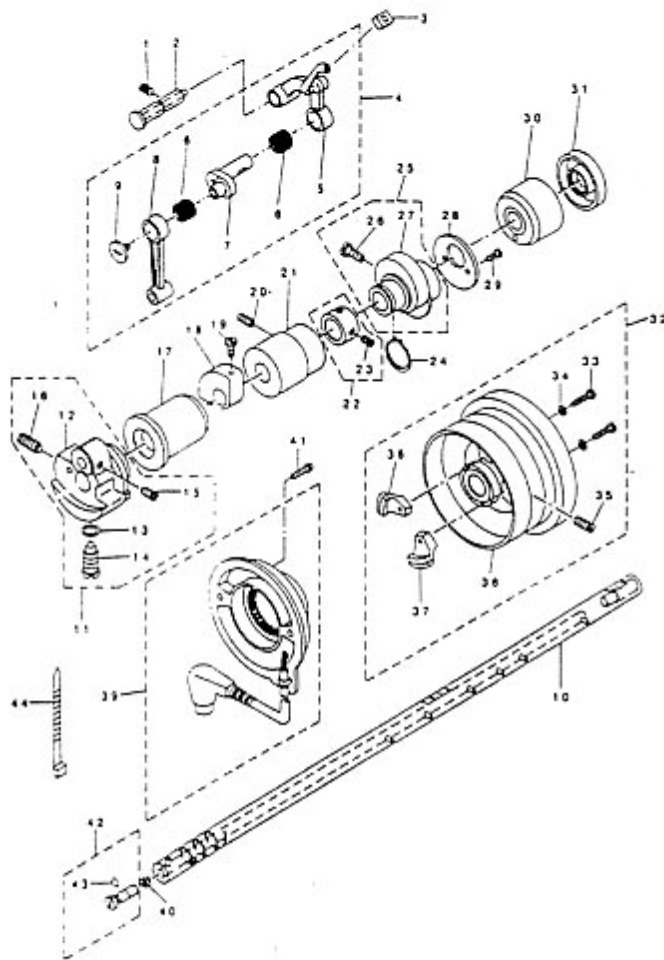
NOTE
 #01..... FOR DLM-5400N-7-03, -W0, -W3
 #02..... FOR DLM-5400N-7-03, -W3
 #03..... FOR DLM-5400N-7-00, -W0
 #04..... EXCEPT JE
 #05..... FOR JE
 #06..... FOR JA

I. MACHINE FRAME & MISCELLANEOUS COVER COMPONENTS



From the library of: Diamond Needle Corp

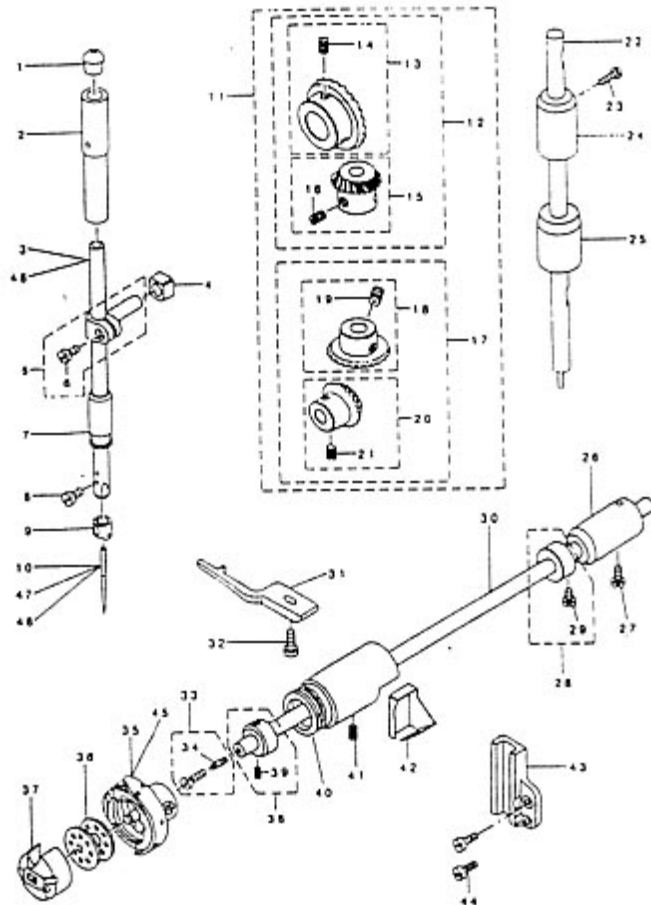
2. MAIN SHAFT & THREAD TAKE-UP LEVER COMPONENTS



REF. NO.	NOTE	PART NO.	DESCRIPTION	Qty.
1		SS-8151150-SP	SCREW 15/64-28 L=10.5	1
2		110-17357	THREAD TAKE-UP CRANK SHAFT ASM	1
3		B1909-505-000	RUBBER	1
4		110-39070	THREAD TAKE-UP LEVER ASM.	1
5		110-39062	THREAD TAKE-UP LEVER ASM.	(1)
6	#01	B1905-541-800	NEEDLE BEARING	(2)
7		110-05204	NEEDLE BAR CRANK	(1)
8		B1408-552-000	NEEDLE BAR CRANK ROD	(1)
9		B1903-552-000	LEFT SCREW	(1)
10		113-49008	MAIN SHAFT	1
11		113-49370	COUNTERWEIGHT ASM. W	1
12		113-49214	COUNTERWEIGHT	(1)
13		RD-0442401-00	RUBBER RING	(1)
14		SS-7681650-TP	SCREW 9/32-28 L=16	(1)
15		SS-8660610-TP	SCREW 1/4-40 L=6	(2)
16		SS-8681650-TP	SCREW 9/32-28 L=16	(1)
17		113-49107	BUSHING, FRONT	1
18		113-49404	BALANCER	1
19		SS-7150940-SP	SCREW 15/64-28 L=9	2
20		SS-8150912-TH	SCREW 15/64-28 L=9	2
21		110-02300	BUSHING, INTERMEDIATE	1
22		CS-147121A-SH	THRUST COLLAR ASM. D=14.72 W=12	1
23		SS-8660610-TP	SCREW 1/4-40 L=6	(2)
24		RC-1850001-KP	SNAP RING 18.5	1
25		110-08059	FEED DRIVE ECCENTRIC CAM ASM.	1
26		SS-6661110-SP	SCREW 1/4-40 L=11	(2)
27		110-08000	FEED DRIVE ECCENTRIC CAM	(1)
28		110-08109	THRUST COLLAR	1
29		SS-6090650-SP	SCREW 9/64-40 L=6	2
30		110-02408	MAIN SHAFT BUSHING, REAR	1
31		110-02508	OIL SEAL	1
32		110-71461	HAND WHEEL ASM.	1
33		SS-6111210-SP	SCREW 11/64-40 L=12	(2)
34		WP-0450801-SD	WASHER 4.5X10X0.8	(2)
35		SS-8151550-SP	SCREW 15/64-28 L=15	(2)
36		110-32155	HAND WHEEL ASM.	(1)
37		W4007-110-0AA	MAGNET FITTING BASE A ASM.	(1)
38		W4007-110-0AB	MAGNET FITTING BASE B ASM.	(1)
39		110-32562	DYNAMO STATOR	1
40		110-02904	ROLLER FELT	1
41		SL-4051001-W2	SCREW M5 L=9.6	2
42		B1213-552-0A0-A	OIL AMOUNT ADJUSTING PIN ASM.	1
43		RD-0291801-00	RUBBER RING	(1)
44		HX-0004300-00	CLIP	1

NOTE #01.....SELECTIVE PART(A~D)

3. NEEDLE BAR, UPRIGHT SHAFT & HOOK DRIVING SHAFT COMPONENTS

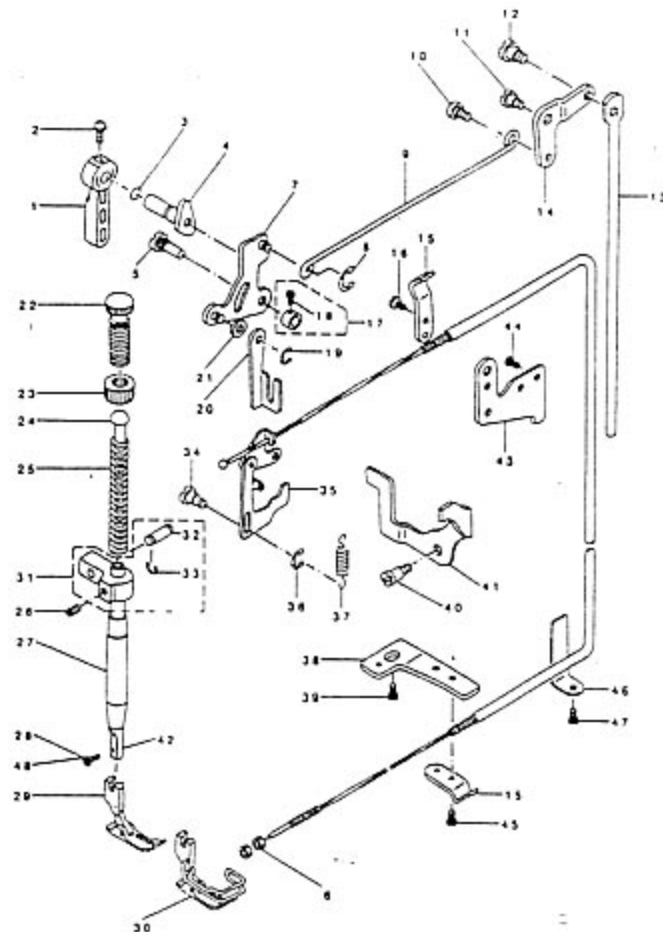


REF. NO.	NOTE	PART NO.	DESCRIPTION	QTY.
1		B1405-012-000	CAP	1
2		B1402-552-000-A	NEEDLE BAR BUSHING, UPPER	1
3		113-49701	NEEDLE BAR, A	1
4		B1414-555-000	SLIDE BLOCK	1
5		B1411-552-0A0	NEEDLE ROD HOLDER ASM.	1
6		SS-6090670-TP	SCREW 9/64-40 L=6	(1)
7		110-05105	NEEDLE BAR BUSHING, LOWER	1
8		SS-7080510-TP	SCREW 1/8-44 L=4.5	1
9		B1418-530-000	NEEDLE BAR THREAD GUIDE	1
10		WDS-100B1400	NEEDLE D&X1 #14	1
11		B1306-155-0C0	GEAR & PINION ASM.	1
12		B1306-155-0B0	GEAR & PINION ASM., UPPER	(1)
13		B1305-012-0A0	GEAR ASM.	(1)
14		SS-8660810-TP	SCREW 1/4-40 L=8	(2)
15		B1306-155-0A0	PINION ASM.	(1)
16		SS-8660810-TP	SCREW 1/4-40 L=8	(2)
17		B1307-155-0B0	GEAR & PINION ASM., LOWER	(1)
18		B1307-155-0A0	GEAR ASM., LARGE	(1)
19		SS-8660810-TP	SCREW 1/4-40 L=8	(2)
20		B1308-155-0A0	PINION ASM.	(1)
21		SS-8660810-TP	SCREW 1/4-40 L=8	(2)
22		110-04009	UPRIGHT SHAFT	1
23		SS-4120915-SP	SCREW 3/16-28 L=9	1
24		110-04306	BUSHING, UPPER	1
25		110-04207	UPRIGHT SHAFT BUSHING, LOWER	1
26		110-15807	BUSHING, REAR	1
27		SS-4120915-SP	SCREW 3/16-28 L=9	1
28		CS-079101A-SH	THRUST COLLAR ASM. D=7.94 W=10	1
29		SS-6110420-TP	SCREW 11/64-40 L=4.8	(2)
30		110-15005	HOOK DRIVING SHAFT	1
31		110-38809	BOBBIN CASE HOLDER	1
32		SS-6111010-SP	SCREW 11/64-40 L= 9.5	1
33		B1808-552-0A0	OIL SEAL SCREW ASM.	1
34		B1810-552-000	OIL WICK	(1)
35	#01	110-38650	LUBRICATING BOBBIN ASM.	1
36		B9117-012-000	BOBBIN	1
37		110-38759	BOBBIN CASE ASM.	1
38		CS-079073A-SH	THRUST COLLAR ASM.	1
39		SS-8110410-TP	SCREW 11/64-40 L= 3.5	(2)
40		113-51004	BUSHING, FRONT	1
41		SS-8150432-TH	SCREW 15/64-28 L=4	1
42		110-38908	OIL SHIELD	1
43		113-49909	ROLLER GUIDE BRACKET	1
44		SS-4120915-SP	SCREW 3/16-28 L=9	2
45		111-41355	HOOK ASM.	1
46	#03	113-49800	NEEDLE BAR, B	1
47	#04	WC-2005009-00	NEEDLE 134 90	1
48	#02	WDP-500B1400	NEEDLE DPX5 #14	1

NOTE #01.....FOR DOMESTIC USE
#02.....FOR JO
#03.....FOR JE, JO
#04.....FOR JE

From the library of: Diamond Needle Corp

4. HAND LIFTER COMPONENTS

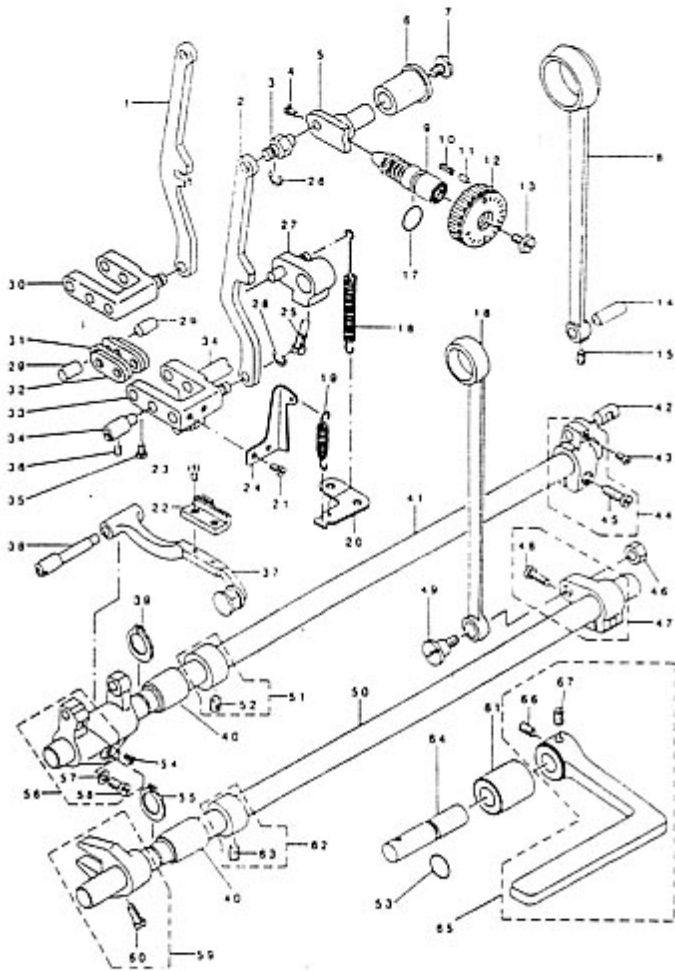


REF. NO.	NOTE	PART NO.	DESCRIPTION	Qty.
1		110-71800	HAND LIFTER	1
2		B1521-555-000	SCREW	1
3		RO-0371801-00	RUBBER RING	1
4		110-06756	HAND LIFTER CAM ASM.	1
5		113-01702	LINK SHAFT	1
6		NS-6620310-SP	NUT 3/16-32	2
7		110-06350	HAND LIFTER LINK	1
8		RE-0500000-KO	E-RING	1
9		110-06905	LIFTING LEVER CONNECTING ROD	1
10		110-07101	HINGE SCREW	1
11		SD-0720331-SP	HINGE SCREW D= 7.24 H= 3.3	1
12		SD-0600322-SD	HINGE SCREW D=6 H=3.2	1
13		112-05408	CONNECTING ROD	1
14		112-05309	LIFTING LEVER LINK	1
15		110-45408	WIRE HOLDER A	2
16		SS-7110720-SP	SCREW 11/64-40 L=7	1
17		CS-064061A-SP	THRUST COLLAR ASM.	1
18		SS-7090620-TI	SCREW 9/64-40 L=6.1	(2)
19		RE-0500000-KO	E-RING	1
20		113-01652	LIFTING LEVER ASM.	1
21		WP-0650876-SD	WASHER 6.5X13X0.8	1
22		110-71602	PRESSER SPRING REGULATOR	1
23		110-71701	NUT	1
24		B1510-227-000	PRESSER GUIDE BAR	1
25		B1505-227-000-A	PRESSER SPRING	1
26		SS-8660610-TP	SCREW 1/4-40 L=6	1
27		B1502-541-000	PRESSER BAR BUSHING, LOWER	1
28	#01	SS-7090710-SP	SCREW 9/64-40 L= 6.8	1
29	#03	B1524-530-DA0	PRESSER FOOT ASM.	1
30	#04	B1524-530-DB0	PRESSER FOOT ASM.	1
31		113-01355	NEEDLE BAR GUIDE BRACKET ASM.	1
32		113-01405	PIN	(1)
33		RE-0300000-KO	E-RING 3	(2)
34		113-06107	TENSION RELEASE PLATE SHAFT	1
35		113-55450	TENSION RELEASE LINK ASM.	1
36		RE-0300000-KO	E-RING 3	1
37		113-05901	SPRING	1
38		110-45705	WIRE HOLDER BRACKET (LOWER)	1
39	#02	SS-4150915-SP	SCREW 15/64-28 L=9	1
40		SD-0640261-SP	HINGE SCREW D=3.65 H=2.6	1
41		113-55609	TENSION RELEASE HOLDER	1
42		B1501-530-000	PRESSER BAR	1
43		113-55203	WIRE HOLDER BRACKET, UPPER	1
44		SS-4120615-SP	SCREW 3/16-28 L=6	1
45		SS-7110410-SP	SCREW 11/64-40 L=4	1
46		110-46000	WIRE CABLE HOLDER	1
47		SS-4120615-SP	SCREW 3/16-28 L=6	1
48	#05	SS-6090910-SP	SCREW 9/64-40 L=9	1

NOTE A #01.....FOR DLW-5400N-7-00,-0B
 #02.....FOR DLW-5400N-7-00,-W0
 #03.....FOR DOMESTIC USE
 #04.....FOR EXPORT
 #05.....FOR DLW-5400N-7-W0,-WB

From the library of: Diamond Needle Corp

5. FEED MECHANISM COMPONENTS

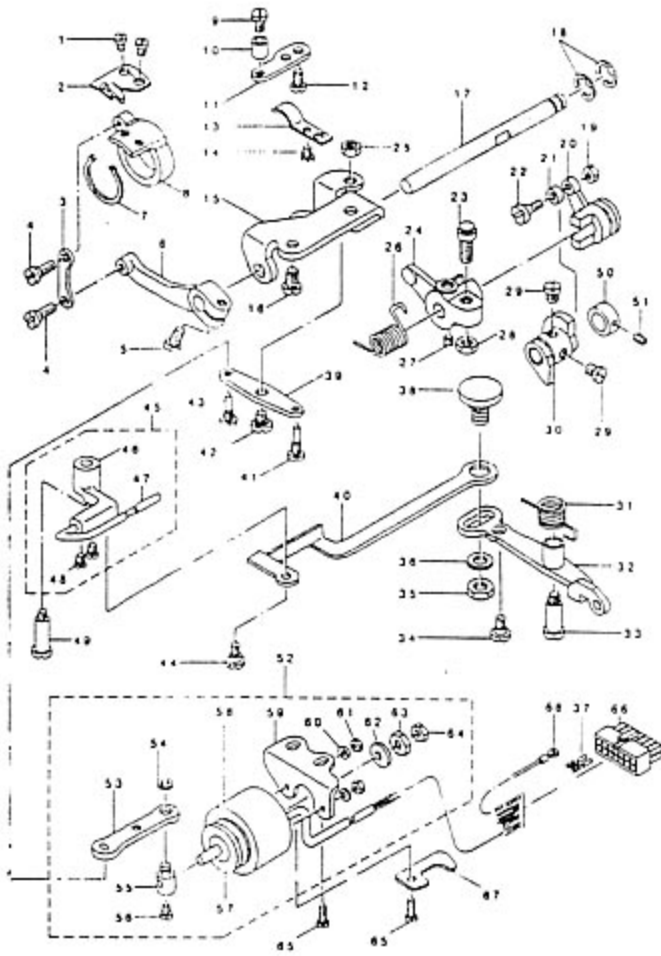


REF. NO.	NOTE	PART NO.	DESCRIPTION	Qty.
1	#01	110-09503	FEED REGULATOR CONNECTING ROD	1
2	#02	111-00401	FEED ADJUST ROD	1
3		110-09602	FEED REGULATOR PIN	1
4		SS-7090520-TP	SCREW 9/64-40 L=4.5	2
5		110-09701	FEED REGULATOR	1
6		110-11509	FEED REGULATOR BUSHING	1
7		SS-7120770-SH	SCREW 3/16-28 L=7	1
8		110-08208	ROCKER SHAFT CONNECTING ROD	1
9		110-09909	FEED REGULATOR SCREW	1
10		B1148-555-000	SPRING	1
11		110-52701	PIN	1
12		110-72006	FEED DIAL	1
13		SS-6121860-SP	SCREW 3/16-28 L=18	1
14		110-09206	WALKING FOOT PIN C	1
15		SS-6090620-SP	SCREW 9/64-40 L=6	1
16		110-14008	CONNECTING ROD	1
17		RO-0922702-00	RUBBER RING	1
18		110-10303	FEED REVERSE SPRING	1
19		110-37405	SPRING	1
20		110-11301	FEED SPRING HOOK	1
21		SS-7110510-SP	SCREW 11/64-40 L=5	2
22		81613-522-N00-A	FEED DOG	1
23		SS-4080620-TP	SCREW 1/8-44 L=6	2
24		110-92301	ADJUSTING LINK SPRING GUIDE	1
25		110-10410	FEED REVERSE ARM SCREW	1
26		RE-0500000-K0	E-RING	1
27		110-10154	FEED REVERSE ARM ASM.	1
28		RE-0500000-K0	E-RING	1
29		110-09008	WALKING FOOT PIN A	2
30	#01	110-08455	WALKING FOOT ADJUSTING LINK	1
31		110-08703	WALKING FOOT LINK	2
32		110-08604	CONNECTING LINK A	2
33	#02	111-00252	FEED ADJUST LINK ASM.	1
34		110-08802	ADJUSTING LINK FULCRUM SHAFT A	2
35		SS-6090620-SP	SCREW 9/64-40 L=6	2
36		SS-6750710-SP	SCREW 15/64-28 L=7	2
37		110-37355	FEED BAR ASM.	1
38		110-37201	FEED BAR SHAFT	1
39		RC-0150001-KP	RETAINING RING 13.8	1
40		110-10907	FEED ROCKER SHAFT BUSHING	2
41		110-10806	FEED ROCKER SHAFT	1
42		110-09107	WALKING FOOT PIN B	1
43		SS-6090620-SP	SCREW 9/64-40 L=6	1
44		110-08356	FEED ROCKER SHAFT CRANK ASM.	1
45		SS-6121610-SP	SCREW 3/16-28 L=15.5	(1)
46		NS-6680410-SP	NUT 9/32-28	1
47		110-14156	REAR CRANK ASM.	1
48		SS-7121610-SP	SCREW 3/16-28 L=15.5	(1)
49		SD-1000801-SH	HINGE SCREW D=10 H=6	1
50		110-14206	FEED DRIVING SHAFT	1
51		CS-147121A-SH	THRUST COLLAR ASM. D=14.72 W=12	1
52		SS-8660610-TP	SCREW 1/4-40 L=6	(2)
53		RO-0781901-00	RUBBER RING	1
54		SS-7110740-TP	SCREW 11/64-40 L=7	1
55		RC-0150001-KP	RETAINING RING 13.8	1
56		110-37157	FEED BAR CRANK ASM.	1
57		WP-0480856-SP	WASHER 4.8X8.4X0.8	(1)
58		SS-7121410-TP	SCREW 3/16-28 L=14	(1)
59		110-14354	DRIVING SHAFT CRANK ASM.	1
60		SS-7111120-SP	SCREW 11/64-40 L=10.5	(1)
61		110-10709	FEED LEVER REVAL	1
62		CS-147121A-SH	THRUST COLLAR ASM. D=14.72 W=12	1
63		SS-8660610-TP	SCREW 1/4-40 L=6	(2)
64		110-10519	FEED REVERSE SHAFT	1
65		110-72154	FEED LEVER ASM.	1
66		SS-8661030-SP	SCREW 1/4-40 L=10	(1)
67		SS-8661040-TP	SCREW 1/4-40 L=10	(1)

NOTE #01.....FOR DLN-5400N-7-00.-W0
#02.....FOR DLN-5400N-7-08.-W3

6. THREAD TRIMMER MECHANISM COMPONENTS

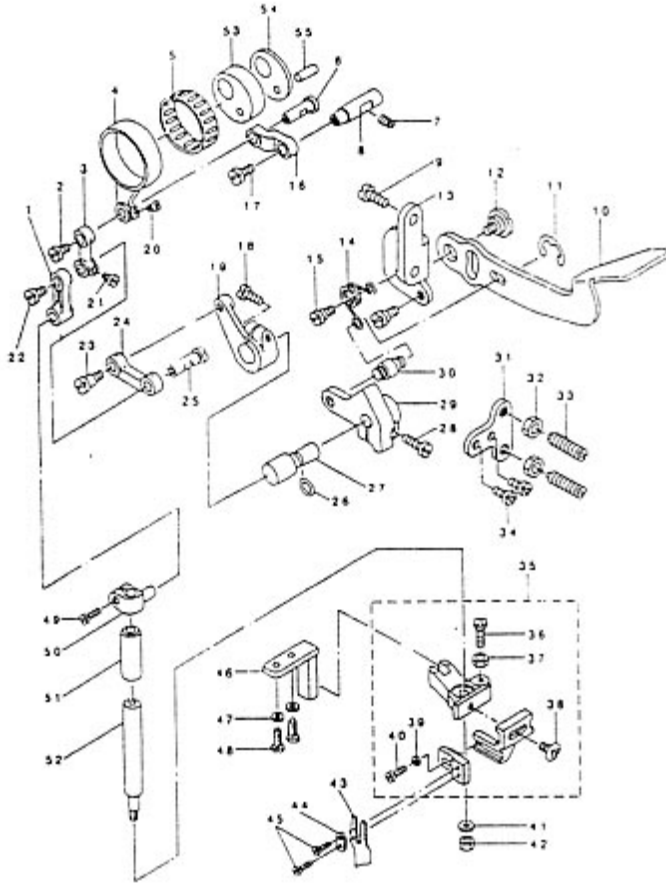
REF. NO. NOTE PART NO. D, E, S, C, R, I, P, T, I, O, N QTY



1	113-51806	SCREW	2
2	113-51400	MOVING KNIFE	1
3	113-52101	MOVING KNIFE LINE	1
4	SD-0500251-SP	HINGE SCREW D= 5 H= 2.5	2
5	SS-5121220-TP	SCREW 3/16-28 L=11.5	1
6	113-52300	KNIFE DRIVING	1
7	RC-2651218-KP	RETAINING RING	1
8	113-51905	MOVING KNIFE BASE	1
9	SS-8110710-SP	SCREW 11/64-40 L=6.5	1
10	113-54602	COLLAR	1
11	113-51608	KNIFE MOUNTING BASE	1
12	SS-4110715-SP	SCREW 11/64-40 L=7	2
13	113-51509	COUNTER KNIFE	1
14	SS-1090510-SP	SCREW 9/64-40 L=5	1
15	113-52408	BASE PLATE	1
16	SS-4150915-SP	SCREW 15/64-28 L=9	2
17	113-52309	KNIFE DRIVING SHAFT	1
18	RE-0600000-K0	E-RING &	2
19	NS-6110310-SP	NUT 11/64-40	1
20	113-52606	SLIDE ARM	1
21	113-54404	DRIVING ROLLER	1
22	D2588-L8W-800	ROLLER SHAFT	1
23	B1453-771-0A0	STOP SCREW ASM.	1
24	113-52507	KNIFE DRIVING ARM	1
25	NS-6150310-SP	NUT 15/64-28	1
26	113-52406	SPRING	1
27	SS-8660610-TP	SCREW 1/4-40 L=6	2
28	NS-6150430-SP	NUT 15/64-28	1
29	SS-6660610-TP	SCREW 1/4-40 L=6	2
30	113-53604	THREAD TRIMMER CAM	1
31	113-53505	SPRING	1
32	113-53059	CLUTCH LEVER ASM.	1
33	SD-0701511-TP	HINGE SCREW D=7 H=15.1	1
34	SD-0600361-SP	HINGE SCREW D=6 H=3.6	1
35	NS-6150430-SP	NUT 15/64-28	1
36	WP-0621016-SH	WASHER	1
37	HL-0346400-08	PIN CONTACT	2
38	110-42306	PICKER LINE PIN	1
39	113-52903	CLUTCH PLATE	1
40	113-54107	PICKER LINE	1
41	113-52705	SCREW PIN, A	1
42	SD-0640261-SP	HINGE SCREW D=3.65 H=2.6	1
43	113-52804	SCREW PIN, B	1
44	SD-0630275-SP	HINGE SCREW D= 6.35 H= 2.7	1
45	113-54057	PICKER ARM ASM.	1
46	113-54008	PICKER ARM	(1)
47	110-42652	THREAD TAKE-UP PICKER ASM.	(1)
48	SS-6090510-SP	SCREW 9/64-40 L=5	(2)
49	SD-0641452-TP	HINGE SCREW D=6.35 H=14.5	1
50	110-42900	CAM COLLAR	1
51	SS-8110520-TP	SCREW 11/64-40 L= 4.5	1
52	113-55054	SOLENOID UNIT	1
53	113-53307	CLUTCH LINK	(1)
54	RE-0500000-K0	E-RING	(1)
55	110-43007	SOLENOID PIN	(1)
56	SS-6110710-TP	SCREW 11/64-40 L= 6.5	(1)
57	110-43205	SOLENOID RUBBER A	(1)
58	110-43908	THREAD TRIMMER SOLENOID	(1)
59	110-43403	SOLENOID BASE	(1)
60	WP-0450000-SD	WASHER 4.5X8X0.5	(2)
61	NS-6040000-SH	NUT #4	(2)
62	110-43304	SOLENOID RUBBER	(1)
63	NS-6660410-SH	NUT	(1)
64	NS-6660430-SP	NUT 1/4-40	(1)
65	SS-4151215-SP	SCREW 15/64-28 L=12	2
66	HK-0346101-40	HOUSING 14P	1
67	110-21706	TUBE HOLDER (LOWER)	1
68	110-44054	GROUND WIRE ASM.	1

From the library of: Diamond Needle Corp

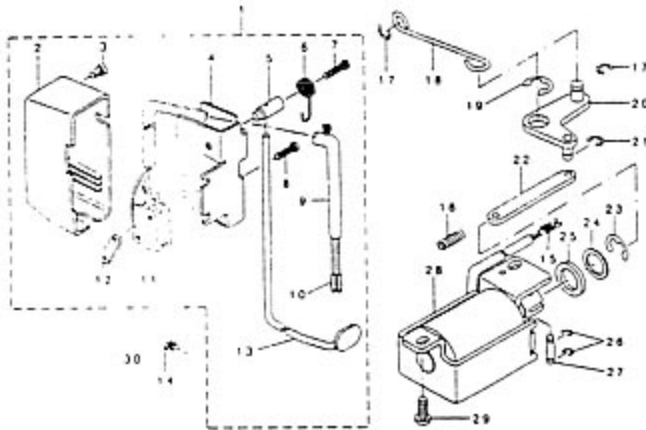
7. KNIFE COMPONENTS



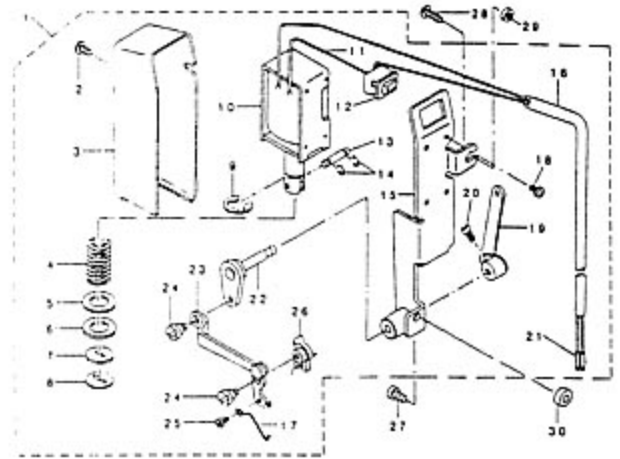
REF. NO.	NOTE	PART NO.	DESCRIPTION	Qty.
1		113-57407	KNIFE DRIVING ROD, B	1
2		SS-7110830-SP	SCREW 11/64-40 L= 7.5	1
3		113-57308	KNIFE DRIVING ROD, A	1
4		113-56904	KNIFE DRIVING ROD	1
5	FOI	84123-522-00A	NEEDLE BEARING	1
6		113-57209	PIN	1
7		SS-8151150-TP	SCREW 15/64-28 L=10.5	1
8		113-57001	ROD LINK SHAFT	1
9		SS-4150915-SP	SCREW 15/64-28 L=9	2
10		113-58207	KNIFE LEVER	1
11		RE-0500000-KO	E-RING	1
12		SD-0920321-SP	HINGE SCREW D= 9.20 H= 3.2	1
13		113-58108	KNIFE LEVER BASE	1
14		84126-530-000	SPRING	1
15		SD-0790431-SP	HINGE SCREW D= 7.94 H= 4.3	1
16		113-57100	KNIFE DRIVING ROD LINK	1
17		SS-7110830-SP	SCREW 11/64-40 L= 7.5	1
18		SS-6121220-TP	SCREW 3/16-28 L=11.5	1
19		113-57704	LINK SUPPORT ARM	1
20		SS-7090520-TP	SCREW 9/64-40 L= 4.5	1
21		SS-7090520-TP	SCREW 9/64-40 L= 4.5	1
22		SS-7110830-SP	SCREW 11/64-40 L= 7.5	1
23		SD-0640604-TP	HINGE SCREW D=6.35 H=6	1
24		113-57506	KNIFE DRIVING LINK	1
25		113-57209	PIN	1
26		RO-0481901-00	RUBBER RING	1
27		113-57803	KNIFE SET LEVER SHAFT	1
28		SS-6121220-TP	SCREW 3/16-28 L=11.5	1
29		113-57902	KNIFE SET LEVER BASE	1
30		84124-530-000	SET LEVER PIN	1
31		113-58306	KNIFE LEVER STOPPER	1
32		NS-6150310-SP	NUT 15/64-28	2
33		SS-8152080-SP	SCREW 15/64-28 L=19.5	2
34		SS-4120915-SP	SCREW 3/16-28 L=9	2
35		84117-530-0A0	KNIFE MOUNTING BASE ASM.	1
36		SS-9121410-TP	SCREW 3/16-28 L=14	(1)
37		NS-6120310-SP	NUT 3/16-28	(1)
38		SS-6110810-TP	SCREW 11/64-40 L=8	(1)
39		WP-0371026-SD	WASHER 3.7X7X1	(1)
40		SS-6090910-SP	SCREW 9/64-40 L=9	(1)
41		WP-0501016-SD	WASHER 5X10,5X1	1
42		NS-6120480-SP	NUT 3/16-28	1
43			KNIFE	1
44		84122-522-000	WASHER	1
45		SS-4080610-SP	SCREW 1/8-44 L=6.4	2
46		84120-530-000	KNIFE MOUNTING BASE GUIDE	1
47		WP-0480856-SP	WASHER 4.8X8.4X0.8	2
48		SS-9120910-TP	SCREW 3/16-28 L=9	2
49		SS-6090810-TP	SCREW 9/64-40 L=7.5	1
50		84115-530-000	KNIFE DRIVING STUD CONNECTION	1
51		84116-530-000	BUSHING	1
52		84114-530-000	KNIFE DRIVING STUD	1
53		84101-531-000	KNIFE MOUNTING BASE ASM.	1
54		84132-522-000-A	THRUST PLATE	1
55		84107-522-000	PIN	1

From the library of: Diamond Needle Corp

8. AUTOMATIC REVERSE FEED COMPONENTS
(FOR DLM-5400N-7-0B,-WB)



9. WIPER COMPONENTS
(FOR DLM-5400N-7-W0,-WB)



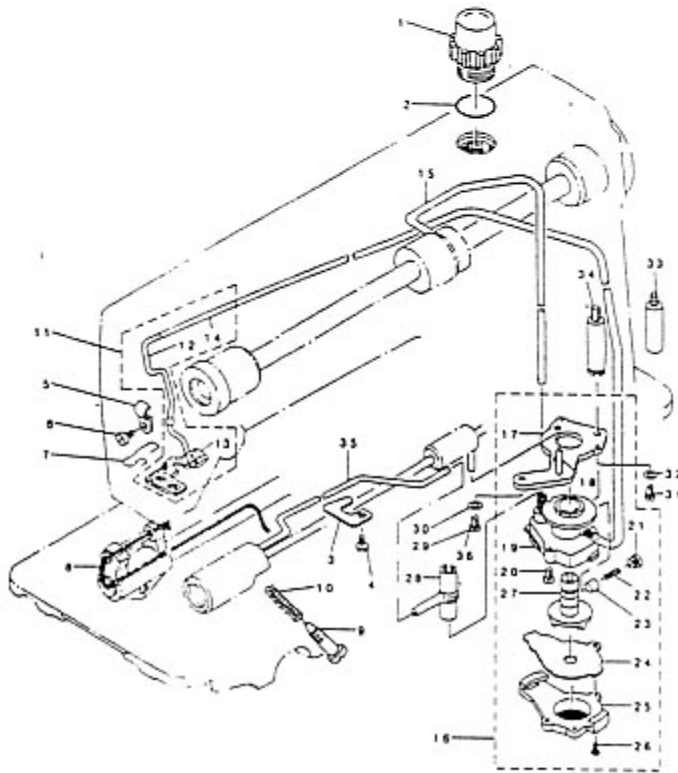
REF. NO.	NOTE	PART NO.	DESCRIPTION	Qty
1		113-62357	REVERSE FEED SWITCH ASM.	1
2		110-72501	REVERSE FEED SWITCH COVER	(1)
3		SS-4110615-SP	SCREW 11/64-40 L=6	(1)
4		111-02001	REVERSE FEED SWITCH BASE	(1)
5		111-02100	REVERSE FEED SWITCH SHAFT	(1)
6		111-02307	REVERSE FEED SWITCH SPRING	(1)
7		SS-4111815-SP	SCREW 11/64 L=18	(1)
8		SM-4031501-SC	SCREW M3 L=15	(2)
9		HW-5000700-00	2-CORE CARYTRE CORD	(1,3)
10		HK-0346400-08	PIN CONTACT	(2)
11		HA-0019000-00	MICROSWITCH	(1)
12		111-02308	MICRO SWITCH PLATE	(1)
13		113-64700	REVERSE FEED SWITCH LEVER	(1)
14	201	SS-4120615-SP	SCREW 3/16-28 L=6	1
15		HK-0346400-08	PIN CONTACT	2
16		112-17801	WALKING FOOT SPRING	1
17		RE-0500000-KP	E-RING 5	2
18		111-01300	REVERSE FEED CONNECTING SHAFT	1
19		RE-0900000-K0	E-RING 9	1
20		111-01151	CONNECTING ARM ASM.	1
21		RE-0400000-KP	E-RING 4	1
22		111-01417	REVERSE FEED CONNECTING LINK	1
23		RE-1200000-K0	E-RING 12	1
24		WP-1602616-SZ	WASHER 16X24X1.6	1
25		D2468-555-800	RUBBER PLUNGER	1
26		RE-0400000-K0	E-RING 4	2
27		111-01003	PLUNGER ARM PIN	1
28		111-02753	REVERSE FEED MAGNET ASM.	1
29		SS-4151215-SP	SCREW 15/64-28 L=12	2
30		SS-4120915-SP	SCREW 3/16-28 L=9	1

NOTE 201.....FOR DLM-5400N-7-0B

REF. NO.	NOTE	PART NO.	DESCRIPTION	Qty
1		113-62456	WIPER ASM.	1
2		SL-4030621-SS	SCREW M3	(1)
3		112-58001	WIPER COVER	(1)
4		112-33400	SPRING	(1)
5		WP-1221016-SP	WASHER	(1)
6		111-34408	SOLENOID RUBBER	(1)
7		112-33301	STOPPER RUBBER	(1)
8		112-34606	STOPPER RUBBER WASHER	(1)
9		RE-0900000-K0	E-RING 9	(1)
10		112-33202	WIPER SOLENOID	(1)
11		HW-2003900-00	ELECTRIC WIRE	(0,25)
12		HA-0005900-00	POWER SWITCH	(1)
13		112-34507	PLUNGER CONNECTING PIN	(1)
14		RE-0300000-K0	E-RING 3	(2)
15		112-33053	WIPER INSTALLING BASE ASM.	(1)
16		HW-5000700-00	2-CORE CARYTRE CORD	(1,3)
17		113-59700	WIPER	(1)
18		SL-4030641-SE	SCREW M3 L=6	(4)
19		112-33251	WIPER LEVER B ASM.	(1)
20		SS-6110710-TP	SCREW 11/64-40 L= 6.5	(2)
21		HK-0346400-08	PIN CONTACT	(2)
22		113-60153	WIPER LEVER ASM. A	(1)
23		113-59957	WIPER ARM ASM.	(1)
24		SD-0550212-TP	HINGE SCREW D=5.5 H=2.1	(2)
25		SS-7090410-SP	SCREW 9/64-40 L= 3.5	(1)
26		113-59809	WIPER BASE	(1)
27		SS-4121415-SP	SCREW 3/16-28 L=14	1
28		SS-4120915-SP	SCREW 3/16-28 L=9	1
29	201	WP-0482086-SD	WASHER 4.8X11.5X2	1
30		135-22206	COLLAR	1

NOTE 201.....FOR DLM-5400N-7-W0

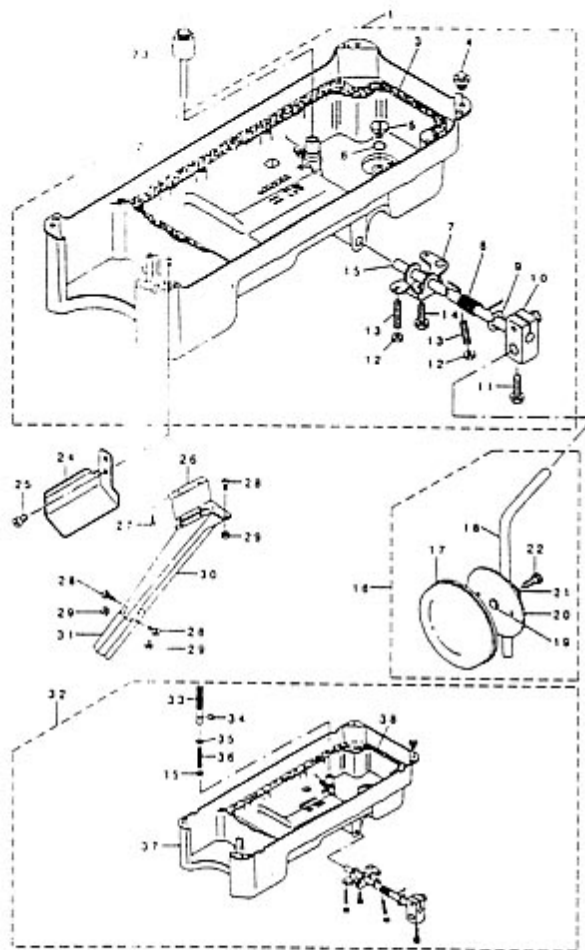
10. OIL LUBRICATION COMPONENTS



REF. NO.	NOTE	PART NO.	DESCRIPTION	Qty.
1		110-46604	OIL SIGHT WINDOW	1
2		RD-1952401-00	RUBBER RING	1
3		110-21706	TUBE HOLDER (LOWER)	1
4		SS-4150915-SP	SCREW 15/64-28 L=9	1
5		B3538-112-000	OIL RETURN TUBE HOLDER	1
6		SS-4120615-SP	SCREW 3/16-28 L=6	1
7		113-56201	OIL FELT PRESSER	1
8		CQ-2520000-00	OIL WICK	0.21
9		B3514-412-000	OIL ADJUSTING SCREW	1
10		B2616-372-000	SPRING	1
11		113-55955	OIL RETURN TUBE ASW.	1
12		113-55906	OIL RETURN TUBE	(1)
13		113-56052	OIL FELT ASW.	(1)
14		BT-0500300-EA	OIL TUBE	(0.52)
15		110-21201	MAIN SHAFT OIL TUBE	1
16		110-20054	LUBRICATING OIL PUMP ASW.	1
17		110-20302	OIL PUMP INSTALLING BASE	(1)
18		110-20906	HOOK DRIVING SHAFT OIL TUBE	(1)
19		110-20005	OIL PUMP	(1)
20		SL-4030851-SF	SCREW M3 L=8	(3)
21		110-20500	PLUNGER SCREW	(1)
22		110-20609	PLUNGER SPRING	(1)
23		110-20401	PLUNGER	(1)
24		110-20807	OIL PUMP IMPELLER COVER	(1)
25		110-20203	LUBRICATING OIL PUMP COVER	(1)
26		SE-4301041-SR	SCREW D=3 L=10	(3)
27		110-20708	OIL PUMP IMPELLER	(1)
28		110-21409	RUBBER JOINT	1
29	#02	SS-4151215-SP	SCREW 15/64-28 L=12	1
30	#02	WS-0651310-KP	SPRING WASHER 6.5X11X1.3	1
31		SS-6111010-TP	SCREW 11/64-40 L= 9.5	1
32	#02	WS-0451040-KP	SPRING WASHER 4.5X8.5X1	1
33	#01	113-92107	OIL PUMP SUPPORT	1
34	#02	111-00609	OIL PUMP SUPPORT	1
35		110-21300	OIL TUBE	1
36	#01	SS-4150915-SP	SCREW 15/64-28 L=9	1

NOTE (注記) #01..... FOR DLW-5400N-7-00, -70
#02..... FOR DLW-5400N-7-0B, -7B

11. OIL RESERVOIR COMPONENTS

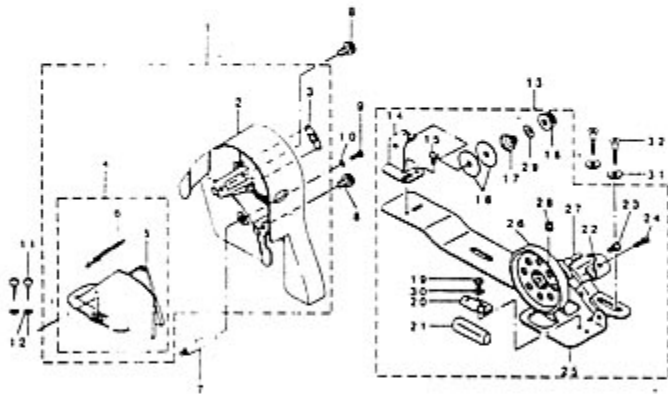


REF. NO.	NOTE	PART NO.	D E S C R I P T I O N	Qty.
1		113-60757	OIL RESERVOIR ASM.	1
2		113-60708	OIL RESERVOIR	(1)
3		110-23108	GASKET	(1)
4		110-47107	RUBBER CUSHION	(4)
5		SS-6700710-SH	SCREW 5/16-24 L=7	(1)
6		RO-0982401-00	RUBBER RING	(1)
7		110-24015	CONNECTING ROD, VERTICAL	(1)
8		110-24106	SPRING	(1)
9		RE-1000000-K0	E-RING 10	(1)
10		110-24510	BRACKET	(1)
11		SW-9062053-SR	SCREW	(2)
12		NW-6060001-SE	NUT #6	(2)
13		SW-8063012-TR	SCREW #6 L=30	(2)
14		SW-9061853-SR	SCREW #6 L=17.5	(1)
15		110-24205	KNEE PRESS ROD	(1)
16		110-23751	KNEE PRESS PLATE ASM.	1
17		H3431-552-000-A	KNEE PRESS PLATE COVER	(1)
18		H3419-122-000	KNEE LIFTER PLATE ROD	(1)
19		110-24403	RUBBER	(1)
20		110-23702	KNEE PRESS PLATE	(1)
21		110-23801	KNEE PRESS PLATE HOLDER	(1)
22		SW-9061203-SE	SCREW #6 L=12	(1)
23		110-24304	KNEE PRESS LIFTER ROD	1
24		113-61003	OIL PUSH GUIDE	1
25		SS-4110715-SP	SCREW 11/64-40 L=7	2
26		113-64403	WASTE MATERIAL CHUTE HOLDER	1
27		SK-3412000-SC	WOOD SCREW D=4.1 L=20	3
28		SS-7090710-SP	SCREW 9/64-40 L= 6.8	8
29		NS-6090310-SP	NUT 9/64-40	8
30		113-64502	WASTE MATERIAL CHUTE, LARGE	1
31		113-64601	WASTE MATERIAL CHUTE, SMALL	1
32		#01 113-69451	OIL RESERVOIR ASM.	1
33		#01 GAX-30001080	KNEE PRESS LIFTER ROD ASM.	(1)
34		#01 RE-0400000-K0	E-SHAPED SNAP RING (4MM)	(1)
35		#01 RP-0621016-SD	WASHER 6.2X13X1	(2)
36		#01 GAX-30005000	SPRING	(1)
37		#01 113-69402	OIL RESERVOIR	(1)
38		#01 111-41702	GASKET	(1)

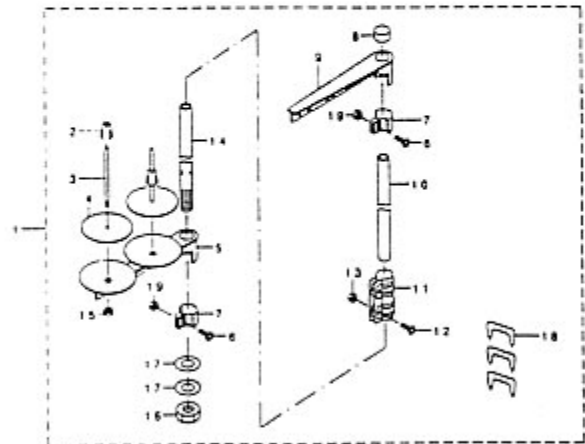
NOTE #01.....FOR JE

From the library of: Diamond Needle Corp

12. BELT COVER & BOBBIN WINDER COMPONENTS



13. THREAD STAND COMPONENTS



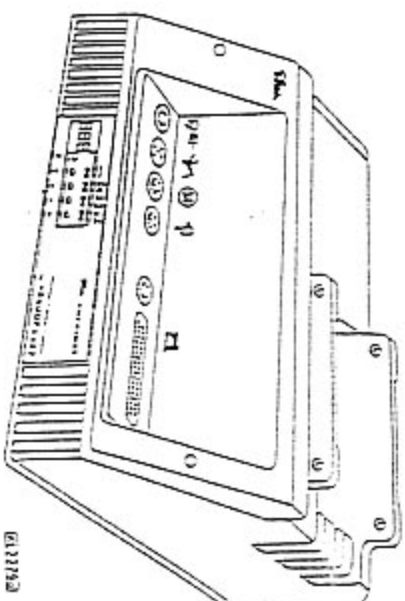
REF. NO.	NOTE	PART NO.	DESCRIPTION	Qty
1		110-76650	BELT COVER ASM. (URBANE GREY)	1
2		110-76601	BELT COVER A	(1)
3		110-76700	BELT COVER A CAP	(1)
4		110-76858	BELT COVER B ASM.	(1)
5		110-76809	BELT COVER B	(1)
6		110-76957	BELT COVER B CAP ASM.	(1)
7		110-23504	BELT COVER SUPPORT, A	1
8		110-25202	BELT COVER A SCREW	2
9		SS-4121415-SP	SCREW 3/16-28 L=14	1
10		WP-0501016-SD	WASHER 5X10.5X1	1
11		SK-3412000-SC	WOOD SCREW D=4.1 L=20	2
12		WP-0450826-SC	WASHER 4.5X10X0.8	2
13		114-15866	BOBBIN WINDER COMPL	1
14		110-78250	THREAD TENSION BRACKET ASM.	(1)
15		SS-7110840-SP	SCREW 11/64-40 L=7.8	(1)
16		83126-011-000	THREAD TENSION DISK	(2)
17		83129-011-800	THREAD TENSION SPRING	(1)
18		110-72204	TENSION NUT	(1)
19		SS-4110515-SP	SCREW 11/64-40 L=5	(1)
20		110-78102	PRESSER PLATE	(1)
21		83311-555-000	RUBBER BRAKE	(1)
22		114-15908	POSITIONING FINGER	(1)
23		SS-0490261-SP	HINGE SCREW D=4.9 R=2.6	(1)
24		SS-7081310-SP	SCREW 1/8-44 L=12.5	(1)
25		110-77500	BOBBIN BASE	(1)
26		110-77809	BOBBIN PULLEY	(1)
27		83204-555-000	BOBBIN WINDER POST	(1)
28		SS-8110510-SP	SCREW 11/64-40 L=5	(1)
29		WP-0551001-SD	WASHER	(1)
30		WP-0480856-SP	WASHER 4.8X8.4X0.8	(1)
31		WP-0450826-SC	WASHER 4.5X10X0.8	2
32		SK-3412000-SC	WOOD SCREW D=4.1 L=20	2

REF. NO.	NOTE	PART NO.	DESCRIPTION	Qty
1		111-85055	THREAD STAND ASM.	1
2		111-85501	SPOOL RETAINER	(2)
3		83320-704-L00-A	SPOOL PIN	(2)
4		83311-012-000	SPOOL REST CUSHION	(2)
5		111-85006	SPOOL REST ARM	(1)
6		SM-4051405-SE	SCREW M5 L=14	(2)
7		111-85402	THREAD GUIDE ARM JOINT	(2)
8		83311-704-000	SPOOL REST ROD CAP	(1)
9		111-85352	THREAD GUIDE ASM.	(1)
10		111-85204	SPOOL REST ROD, UPPER	(1)
11		83305-704-000-A	SPOOL REST ROD JOINT	(1)
12		SM-4051405-SE	SCREW M5 L=14	(2)
13		NW-6050001-SE	NUT M5	(2)
14		111-85105	SPOOL REST ROD, LOWER	(1)
15		NW-6050001-SE	NUT M5	(2)
16		83317-704-000	NUT	(1)
17		WP-1612616-SE	WASHER 16X30X2.6	(2)
18		MA0-11532000	CORD STAPLE	(3)
19		NW-6050001-SE	NUT M5	(2)

Efka euramot

CONTROL

ABB0D1467



INSTRUCTION MANUAL

No. 402252 english

Efka

ELECTRONIC MOTORS SINGAPORE PTE. LTD.

47, ATEEN ROAD SINGAPORE 05 07 · SINGAPORE 139550
PHONE: 3323459 · TELEFAX: 3715010 · e-mail: efka@european.com.sg

TELEPHONE: 4180235353

Efka

FRANKE & KIRCHNER GMBH & CO KG

SCHIEFELSTRASSE 73 · D 60123 SCHWETZINGEN
TEL: 0670212020 · TELEFAX: 06702120215
e-mail: info@efka.germany.net · http://www.efka.germany.net

Efka

OF AMERICA INC.

2115 MONTICELLO ROAD · SUITE 10 · ATLANTA · GEORGIA 30340
PHONE: 770457-2006 · TELEFAX: 770458-2899 · e-mail: efka@efad.com

Efka

FRANKE & KIRCHNER
GMBH & CO KG

Efka

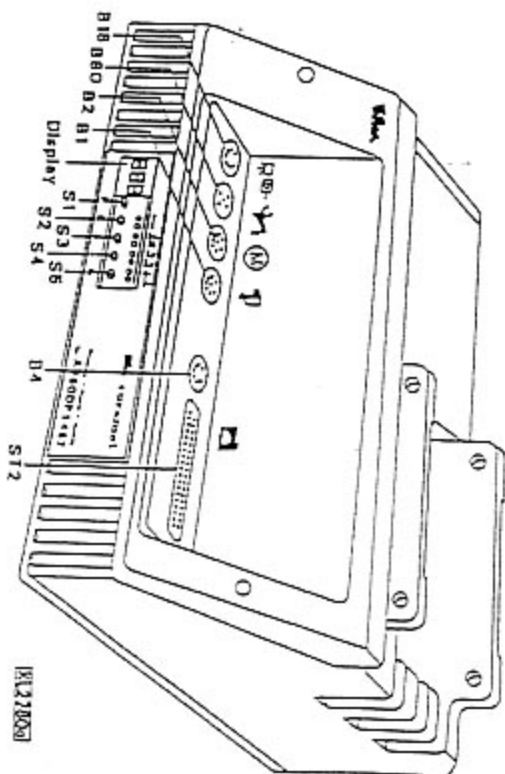
OF AMERICA INC.

Efka

ELECTRONIC MOTORS
SINGAPORE PTE LTD.

For your notes:

10. Operating Elements and Socket Connectors on the Control



- B1 . Position transmitter
- B2 . Commutation transmitter for d.c. motor
- B4 . Inputs for pushbuttons
- B10 . Light handler module
- B80 . Actuator
- ST2 . Inputs and outputs for solenoids / solenoid valves / displays / pushbuttons and switches
- S1..S5 . Pushbuttons for programming and selection of functions
- Display . 3 digits

9. Error Messages

General Information	
On the control	Signification
A1	Fedal not in neutral position, when switching the machine on according to setting of parameter 2301
A2	Blocking of machine run (safety switch)
A3	Double thread monitor
A8	Light barrier control

Programming Functions and Values (Parameters)

On the control	Signification
Returns to the last digit	Wrong code number or parameter number input

Serious Situation

On the control	Signification
E1	After power (in position transmitter or communication transmitter) defective or connecting cables have been changed by mistake. During machine run or after a sewing operation, only position transmitter defects can be identified.
E2	Line voltage too low, or time between power off and power on too short
E3	Machine locks or does not reach the desired speed
E4	Control disturbed by defective grounding or loose contact

Hardware Disturbance

On the control	Signification
H1	Communication transmitter send or reception converter disturbed
H2	Processor disturbed

7.10 Speed Limitation of	21
7.11 Bobbin Thread Monitor	21
7.12 Thread Trimming Operation	25
7.12.1 LockKnock Thread Trimmer (Shooter D, A, 10, 11 and 11)	25
7.12.1.1 Trimming Speed	26
7.12.2 Chainlock Thread Trimmer (Shooter 4, 5 and 6)	26
7.12.2.1 Trimming Signal Lines	26
7.11 Function for Overlock Machines (Plate 7)	26
7.13.1 Signal Chain Section	26
7.13.2 Start and End Counting	27
7.14 Function of the Output Signal M1	28
7.15 Tape Counter (Book 6/2)	28
7.15.1 Function: Tape Counter	28
7.15.2 Hook for Tape Counter Sensor	28
7.16 Manual Tape Center/Fast Start	29
7.17 Function for Backlash Markers (Book 8/9)	29
7.18 Scan with Stitch Counting	29
7.18.1 Stitches for Stitch Counting	29
7.18.2 Stitch Counting Speed	29
7.18.3 Scan with Stitch Counting When Light Barrier is On	29
7.19 Face Scan and Scan with Light Barrier	30
7.20 Light Barrier	30
7.20.1 Speed after Light Barrier Sensing	30
7.20.2 General Light Barrier Functions	31
7.20.3 Reflection Light Barrier	31
7.20.4 Light Barrier Control	31
7.20.5 Automatic Start by Light Barrier	32
7.20.6 Light Barrier Filter for Position Filter	32
7.20.7 Functional Variations of the Light Barrier Input	32
7.21 Switching Function of the Input in1, in3 and in1	33
7.22 Speed Limitation with External Frequency Converter	34
7.23 Function Error Message A1 On/Off	34
7.24 Signal Output Position 1	34
7.25 Signal Output Position 2	34
7.26 Signal Output - 170 Input/Output	35
7.27 Actuator	35
7.28 Atlaster Press	36

8. Signal Test

8.1 Signal Test Using the Incorporated Control Panel

9. Error Messages

10. Operating Elements and Socket Connectors on the Control

8. Signal Test

Functions	Parameter
Test of inputs and outputs	123

Function test of the external inputs and the transistor power outputs with the actuators connected to them (e.g. solenoids and solenoid valves).

8.1 Signal Test Using the Incorporated Control Panel

Output test:

- Address parameter 123
- Select the desired output by the +/- pushbuttons
- Activate the selected output by pushbutton > > on the incorporated control panel

Pushbutton	Output
ON/OFF	Input test
01	Free on socket ST2214
02	Presser foot lifting on socket ST2235
03	Output M1 on socket ST2212
04	Output M3 on socket ST2222
05	Output M2 on socket ST2228
06	Free
07	Output M4L on socket ST2232

Input test:

- Press the (-) pushbutton several times until 'OFF' or 'ON' appears on the control display.
- Actuation of the external switches or pushbuttons will be indicated by alternating the switching state (ON/OFF) on the display.
- Several switches must not be closed at the same time.